



ATTACHMENTS MINUTES

**Strategy, Finance and Risk Committee
Meeting**

Monday, 21 June 2021

Table of Contents

9.1 Representation Review

Attachment 1 Presentation - Representation Review..... 4



Representation Review 2021-22

10 May 2021



Objectives

- Understand key concepts - identify communities of interest, effective and fair representation
- At large, wards or mix of both
- Local Government Commission's role
- Community boards
- Early engagement



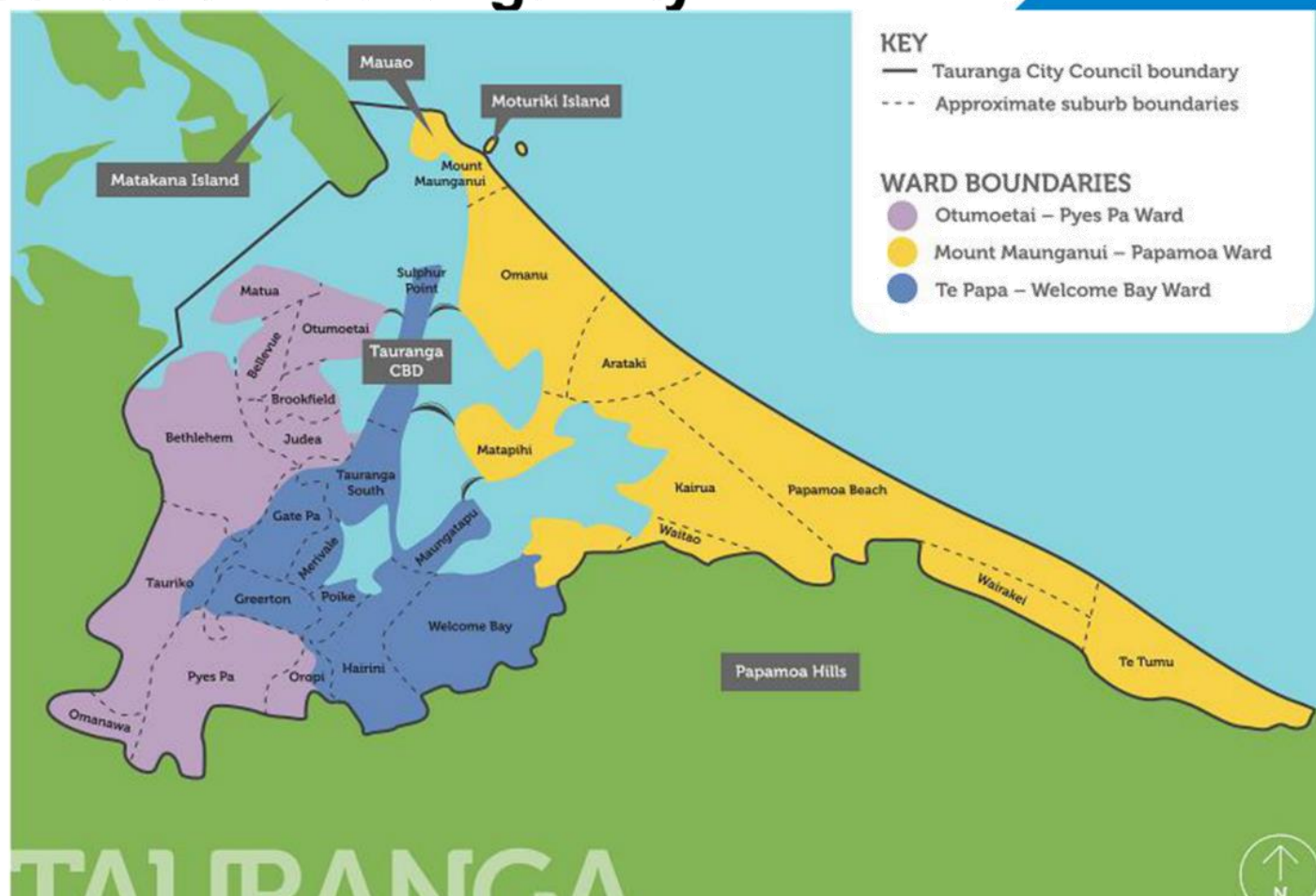
Questions

1. What are the communities of interest in Tauranga City?
2. Are there shared common community of interests spread across the city?
3. Are there specific geographically based communities of interest?
4. Do councillors need to be elected from different geographical areas of the city?
5. How many elected members do you need for effective representation?
6. How are they to be elected – at large (city wide), general or Māori wards only, mixture?
7. Should voters have a say in the election of a large number of councillors?
8. What about community boards?



Current representation Tauranga City

- Review current arrangements
 - 10 councillors elected – 4 elected at large and 6 from 3 wards
 - Mayor elected at large
 - No community boards



Comparison other metros

Hamilton City – pop 176,500

Palmerston North City – pop 90,350

Hutt City – 104,535

Wellington City – pop 216,200


Christchurch City – pop 394,600

Dunedin City Council – pop 134,150

- 12 Councillors - 2 wards - FPP
- 15 Councillors – at large – STV
- 12 Councillors – 6 wards, 6 at large and 3 community boards - FPP
- 14 Councillors – 5 wards - STV
- 16 Councillors – 16 wards and 7 community boards - FPP
- 14 Councillors – at large and 6 community boards - STV

Tauranga City Council

Communities of interest


- need to be identified first
 - area where one feels a sense of community and belonging – (perceptual)
 - distinct physical and topographical features e.g river, harbour, lakes, beach, Mauao (geographical attachment)
 - access to and dependence on daily goods and services (functional)
 - the ability of the elected body to represent the interests and reconcile the conflicts of all its members (political)
 - can change over time – communities change over time
- 

Effective Representation


consider how communities of interest are most effectively represented

- total number of elected members
- elected members elected from wards/'at large'/mix
- ward names, boundaries (must coincide with statistical mesh blocks)
- community boards (establish?) number, names, boundaries, membership, subdivisions)


Fair representation

- population equity for wards (+/- 10% rule)
 - generally means each elected member represents about same number of people (within +/-10%)
 - 5-29 members (excluding Mayor)
 - current arrangements do not comply
 - any proposal must comply
 - exemptions for isolated or island communities (not apply TCC)
 - if non-complying proposal – it must go to the Local Government Commission
- 


Community Boards

- optional
 - must be considered during review
 - range from 4-12 members
 - do not have to cover all of city or district
 - role set out in LGA
 - delegations vary across councils
 - Remuneration Authority review of remuneration for Community Boards April 2019
- 

Electoral System

- Single Transferable Vote (STV) – preferential ranking of candidates 1,2,3
 - STV – Tauranga City used for first time in 2019 election
 - STV for 2022 election
 - STV most effective with more members per ward to broadly reflect proportionality of population – suitable for “at large”
 - seen as enhancing opportunities for women, Māori and ethnic minorities to be elected
- 

Māori Representation

- Decision cannot be reversed through representation review – only decide name and boundaries of ward
 - Number of Māori members based on formula – increases based on number of overall councillors (at large councillors excluded from formula)
 - One Māori ward to be established
- 

Local Government Commission



Brendan Duffy (Chair)

Consider appeals and objections (if any)

Consider any non-complying proposals

Janie Annear

Sue Piper

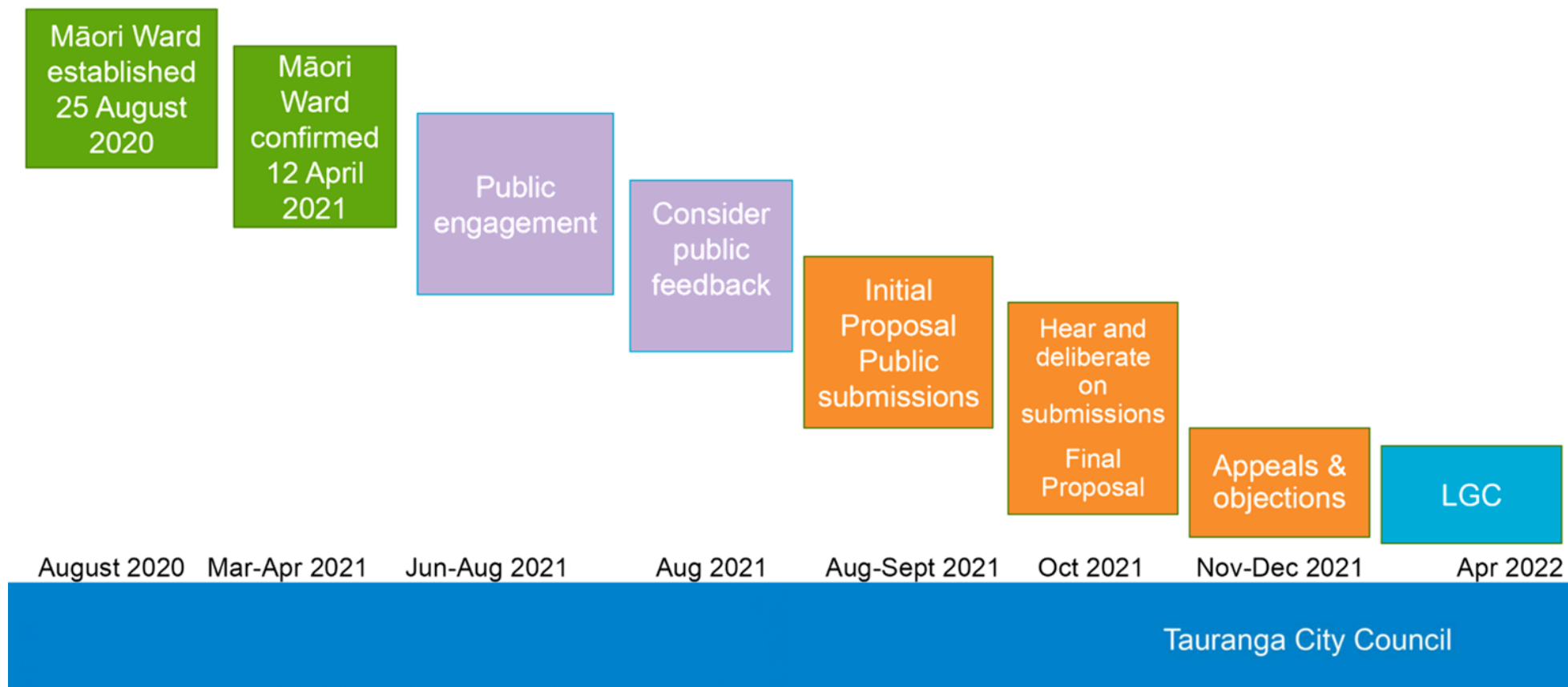


Not limited to scope of appeals and objections

Issue final determination

Tauranga City Council

Timeline overview



Option 1 Non-complying

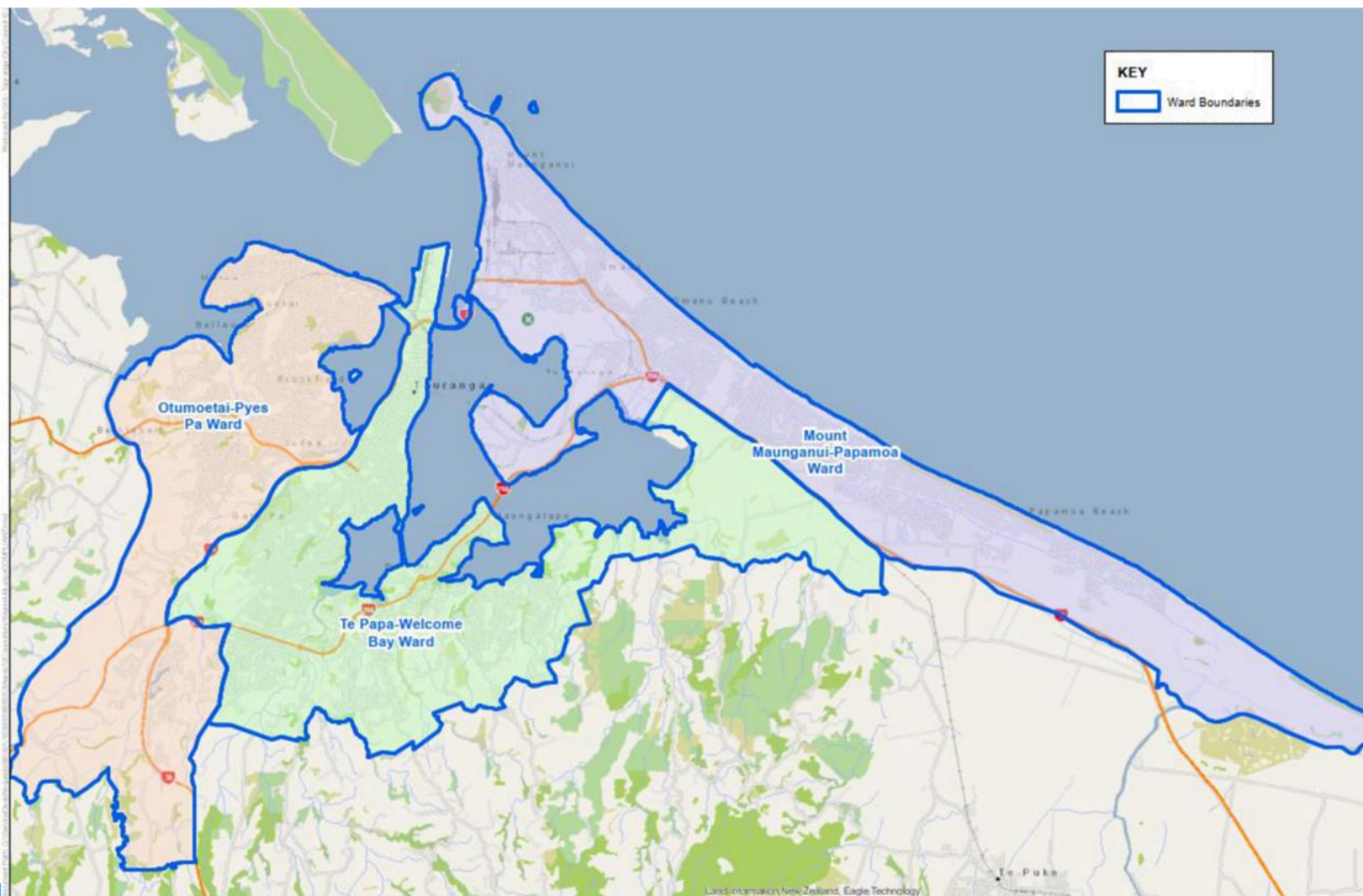
Fixed model

2 councillors

councillors
from 3 wards

at large
councillors

Māori
councillor



Option 1 – non-complying

Ward	number of councillors	population	pop per councillor	Deviation from city av per councillor	% deviation from city av per councillor
Mount Maunganui-Papamoa Ward	2	50,750	25,375	2,625	11.54
Otumoetai - Pyes Pa Ward	2	42,300	21,150	-1,600	-7.03
Te Papa - Welcome Bay Ward	2	43,450	21,725	-1,025	-4.51
Total	6	136,500	22,750		

Option 1 Complying

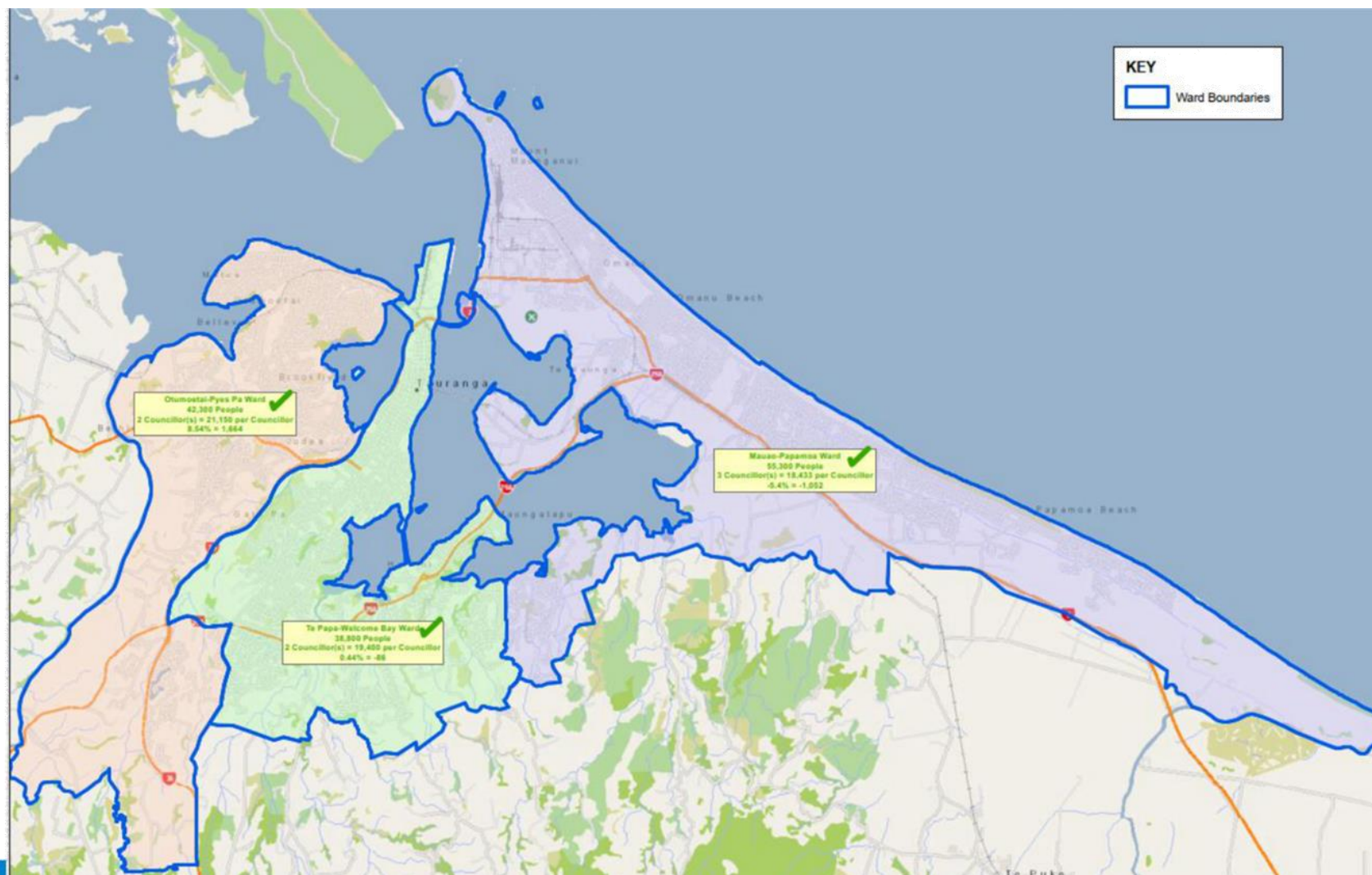
Mixed model

12 councillors

7 councillors
from 3 wards

4 at large
councillors

1 Māori
councillor



Option 1 – complying

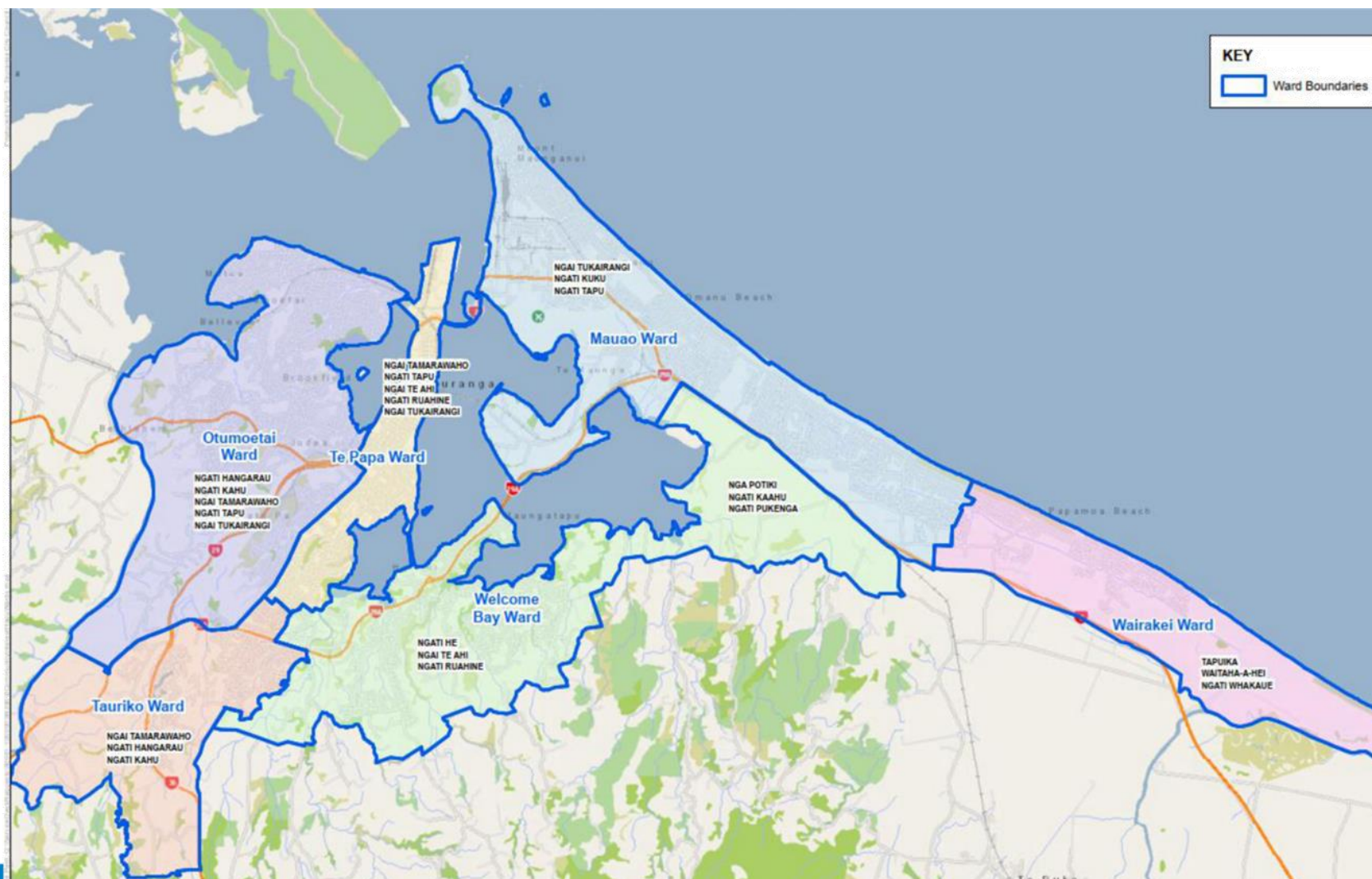
Ward	Number of councillors	General electoral population	Population per councillor	Deviation from city av per councillor	% deviation from city av per councillor
Mount Maunganui - Papamoa Ward	3	55,300	18,433	-1,052	-5.40
Otumoetai-Pyes Pa Ward	2	42,300	21,150	1,664	8.54
Te Papa-Welcome Bay Ward	2	38,800	19,400	-86	-0.44
Total	7		19,486		

Option 2 Wards Non-complying

12 councillors

11 councillors from
6 general wards
1 councillor from
Māori ward

Welcome Bay
-18%



ward:

Option 2 – non-complying

Ward	number of councillors	Population	pop per councillor	Deviation from city av per councillor	% deviation from city av per councillor
Mauao Ward	3	38,250	12,750	341	2.75
Otumoetai Ward	3	40,200	13,400	991	7.99
Te Papa Ward	1	12,350	12,350	-59	-0.48
Welcome Bay Ward	2	20,350	10,175	-2,234	-18.00
Tauriko Ward	1	12,800	12,800	391	3.15
Wairakei Ward	1	12,550	12,550	141	1.14
Total	11	136,500	12,409		

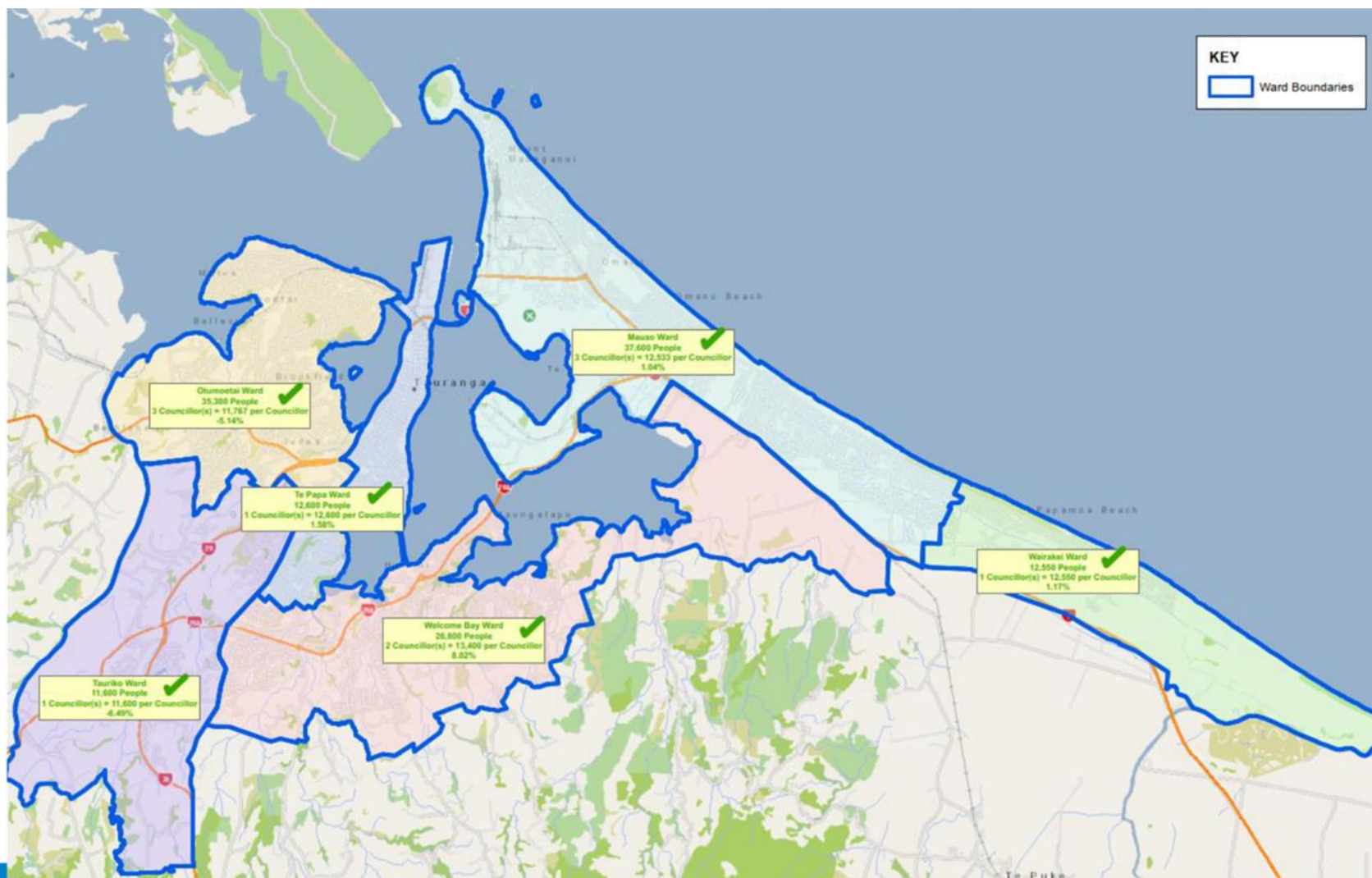
Option 2 Wards

Complying

12 councillors

11 councillors
from 6 general
wards

1 councillor
from Māori ward



Option 2 - Complying

Ward	Number of councillors	General Electoral Population	pop per councillor	Deviation from city av per councillor	% deviation from city av per councillor
Mauao Ward	3	37,600	12,533	129	1.04
Otumoetai Ward	3	35,300	11,767	-638	-5.14
Te Papa Ward	1	12,600	12,600	195	1.58
Welcome Bay Ward	2	26,800	13,400	995	8.02
Tauriko Ward	1	11,600	11,600	-805	-6.49
Wairakei Ward	1	12,550	12,550	145	1.17
Total	11		12,405		

Tauranga City Council

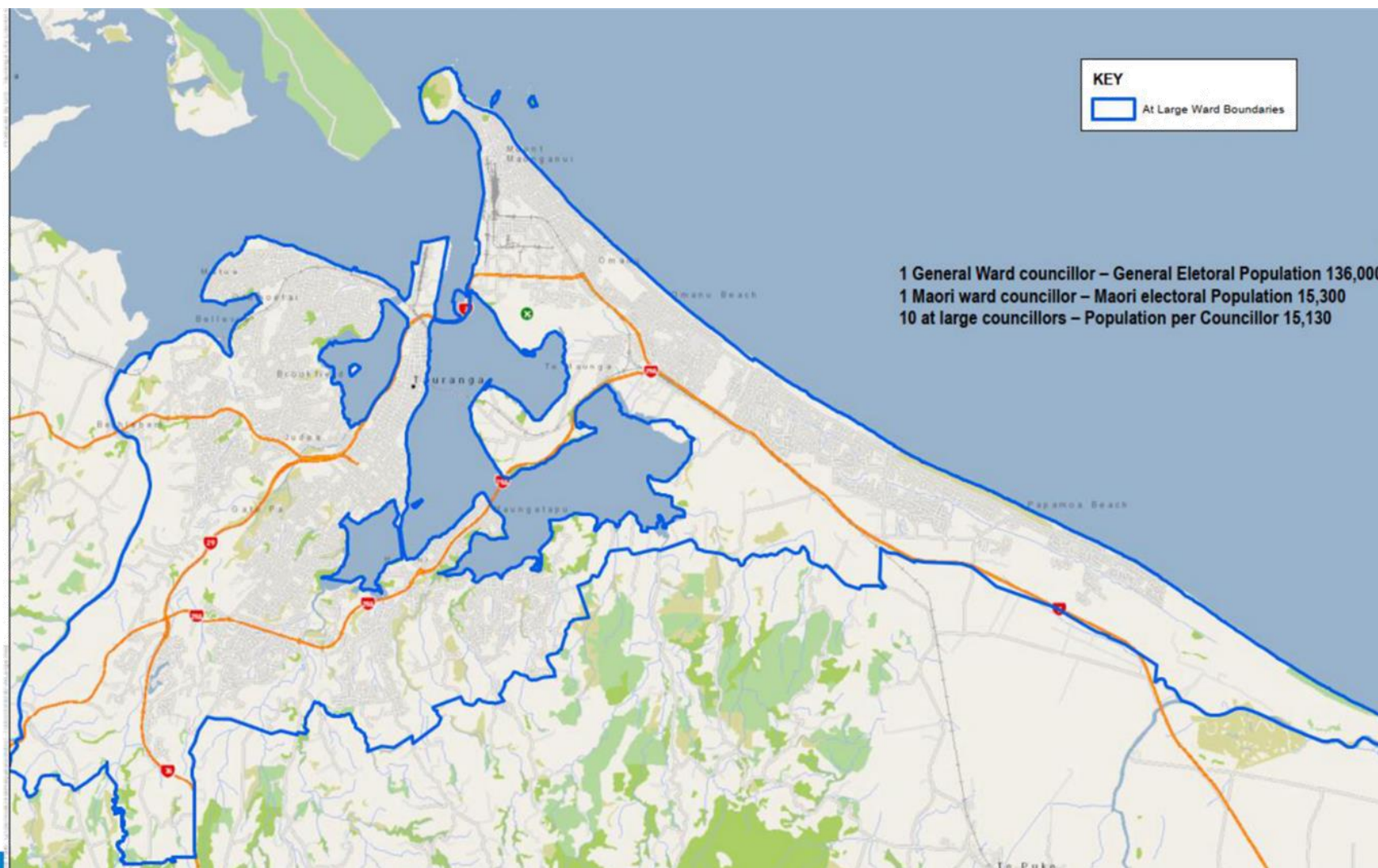
Option 3 at large

12 Councillors

10 elected at
large

1 elected from a
general ward

1 elected from
Māori ward



Questions?

Suburbs

