



# **ATTACHMENTS MINUTES**

**Tangata Whenua / Tauranga City  
Council Committee Meeting**

**Wednesday, 23 June 2021**



## Table of Contents

---

10.3	Presentation on the Representation Review	
	Attachment 1 Presentation - Representation Review.....	4
	Attachment 2 Tabled item - Map.....	25
	Attachment 3 Tabled item 2 - Map.....	26



# Representation Review 2021-22

23 June 2021 – Tangata Whenua/TCC Committee



# Objectives

- Understand key concepts - identify communities of interest, effective and fair representation
- At large, wards or mix of both
- Local Government Commission's role
- Community boards
- Early engagement



# Questions

1. What are the communities of interest in Tauranga City?
2. Are there shared common community of interests spread across the city?
3. Are there specific geographically based communities of interest?
4. Do councillors need to be elected from different geographical areas of the city?
5. How many elected members do you need for effective representation?
6. How are they to be elected – at large (city wide), general or Māori wards only, mixture?
7. Should voters have a say in the election of a large number of councillors?
8. What about community boards?





## Current representation Tauranga City

- Review current arrangements
  - 10 councillors elected – 4 elected at large and 6 from 3 wards
  - Mayor elected at large
  - No community boards




## Comparison other metros

Hamilton City – pop 176,500	• 12 Councillors - 2 wards - FPP
Palmerston North City – pop 90,350	• 15 Councillors – at large – STV
Hutt City – 104,535	• 12 Councillors – 6 wards, 6 at large and 3 community boards - FPP
Wellington City – pop 216,200	• 14 Councillors – 5 wards - STV
Christchurch City – pop 394,600	• 16 Councillors – 16 wards and 7 community boards - FPP
Dunedin City Council – pop 134,150	• 14 Councillors – at large and 6 community boards - STV

Tauranga City Council



# Communities of interest


- need to be identified first
  - area where one feels a sense of community and belonging – (perceptual)
  - distinct physical and topographical features e.g river, harbour, lakes, beach, Mauao (geographical attachment)
  - access to and dependence on daily goods and services (functional)
  - the ability of the elected body to represent the interests and reconcile the conflicts of all its members (political)
  - can change over time – communities change over time
- 

# Effective Representation

consider how communities of interest are most effectively represented

- total number of elected members
- elected members elected from wards/'at large'/mix
- ward names, boundaries (must coincide with statistical mesh blocks)
- community boards (establish?) number, names, boundaries, membership, subdivisions)


# Fair representation

- population equity for wards (+/- 10% rule)
  - generally means each elected member represents about same number of people (within +/-10%)
  - 5-29 members (excluding Mayor)
  - current arrangements do not comply
  - any proposal must comply
  - exemptions for isolated or island communities (not apply TCC)
  - if non-complying proposal – it must go to the Local Government Commission
- 


# Community Boards

- optional
- must be considered during review
- range from 4-12 members
- do not have to cover all of city or district
- role set out in LGA
- delegations vary across councils
- Remuneration Authority review of remuneration for Community Boards April 2019

# Electoral System

- Single Transferable Vote (STV) – preferential ranking of candidates 1,2,3
  - STV – Tauranga City used for first time in 2019 election
  - STV for 2022 election
  - STV most effective with more members per ward to broadly reflect proportionality of population – suitable for “at large”
  - seen as enhancing opportunities for women, Māori and ethnic minorities to be elected
- 

# Māori Representation

- Decision cannot be reversed through representation review – only decide name and boundaries of ward
  - Number of Māori members based on formula – increases based on number of overall councillors (at large councillors excluded from formula)
  - One Māori ward to be established
- 



# Local Government Commission



Brendan Duffy  
(Chair)

- Consider appeals and objections (if any)
- Consider any non-complying proposals
- Not limited to scope of appeals and objections
- Issue final determination

Janine Annear



Sue Piper

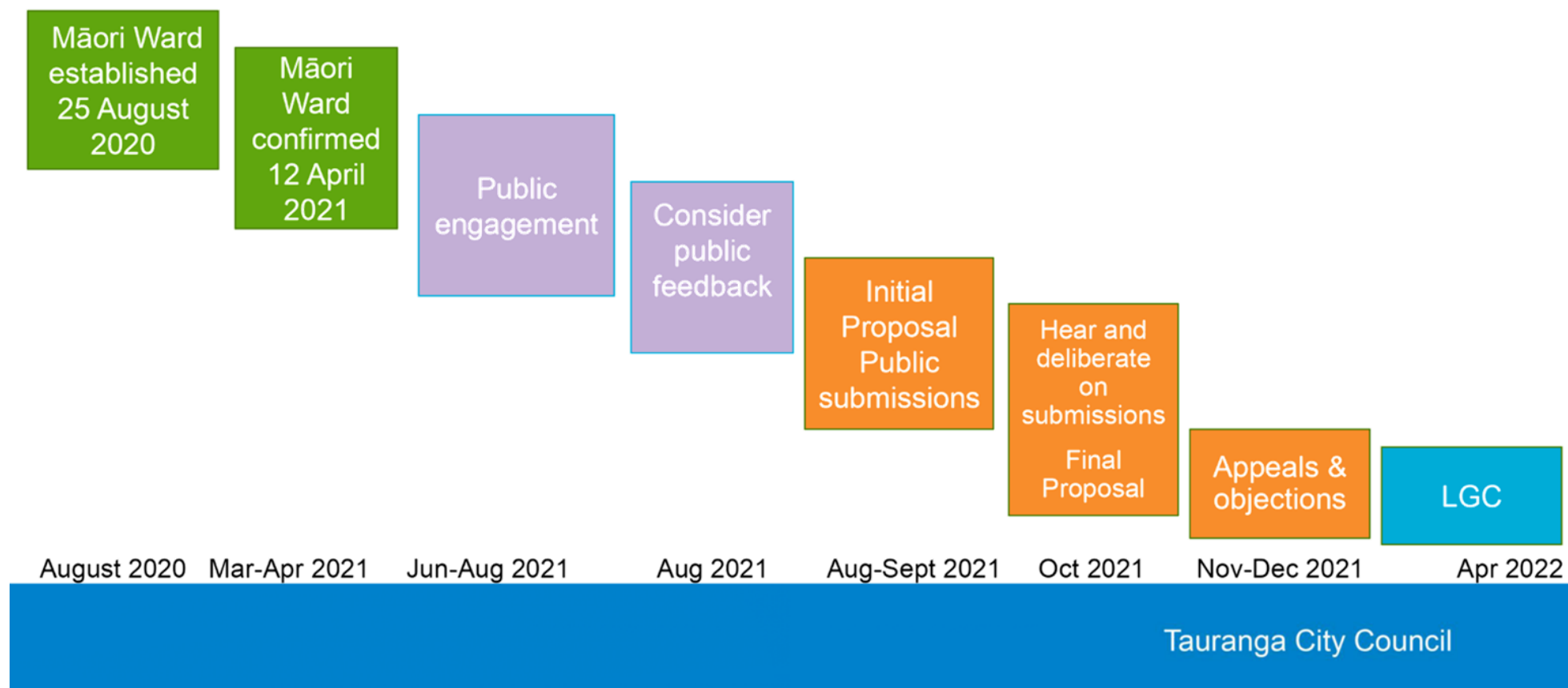


Bonita Bigham



Tauranga City Council

# Timeline overview



## Option 1 Complying

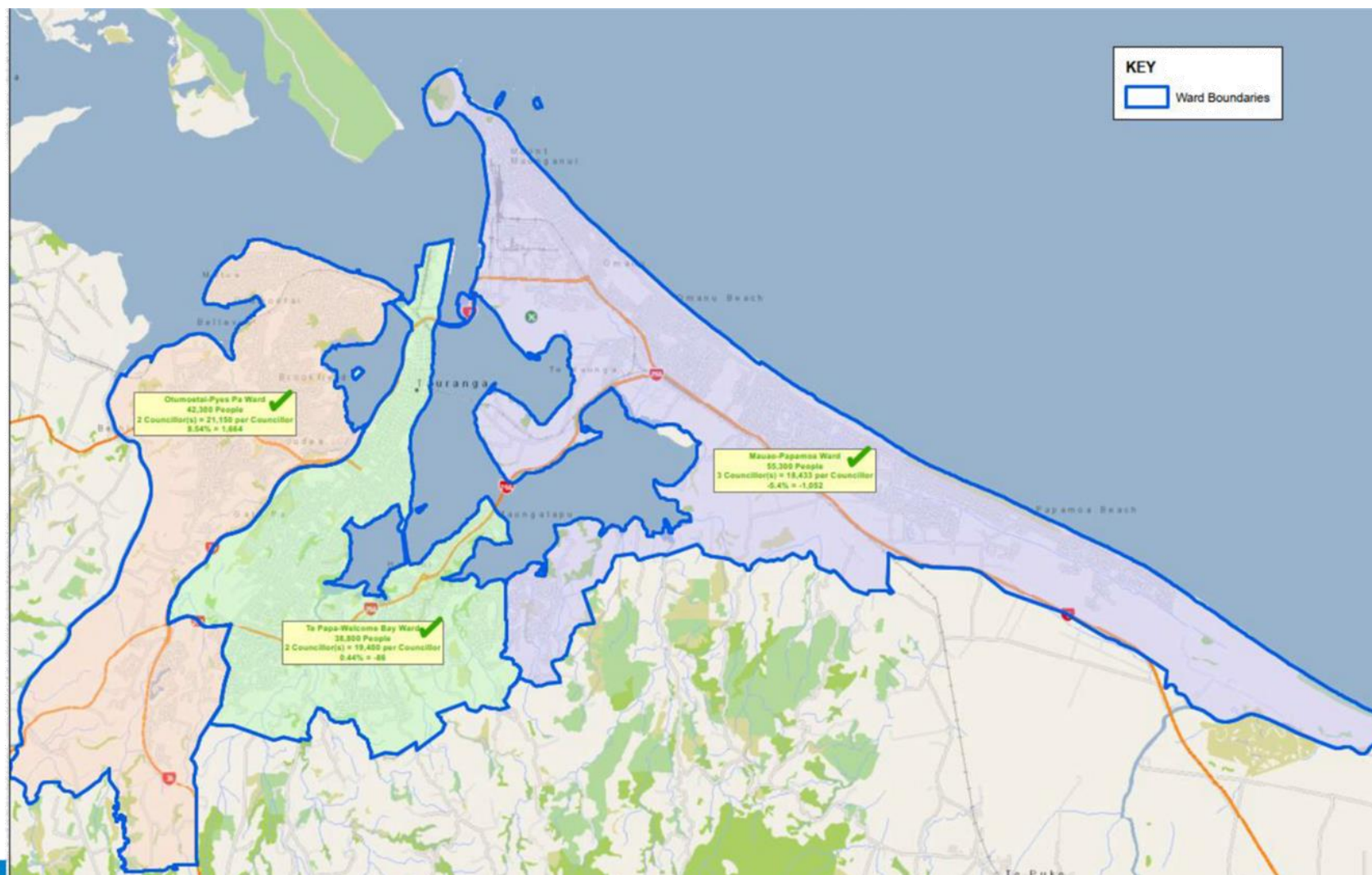
Mixed model

12 councillors

7 councillors  
from 3 wards

4 at large  
councillors

1 Māori  
councillor



## Option 1 – complying

Ward	Number of councillors	General electoral population	Population per councillor	Deviation from city av per councillor	% deviation from city av per councillor
<b>Mount Maunganui - Papamoa Ward</b>	3	55,300	18,433	-1,052	-5.40
<b>Otumoetai-Pyes Pa Ward</b>	2	42,300	21,150	1,664	8.54
<b>Te Papa-Welcome Bay Ward</b>	2	38,800	19,400	-86	-0.44
<b>Total</b>	7		19,486		



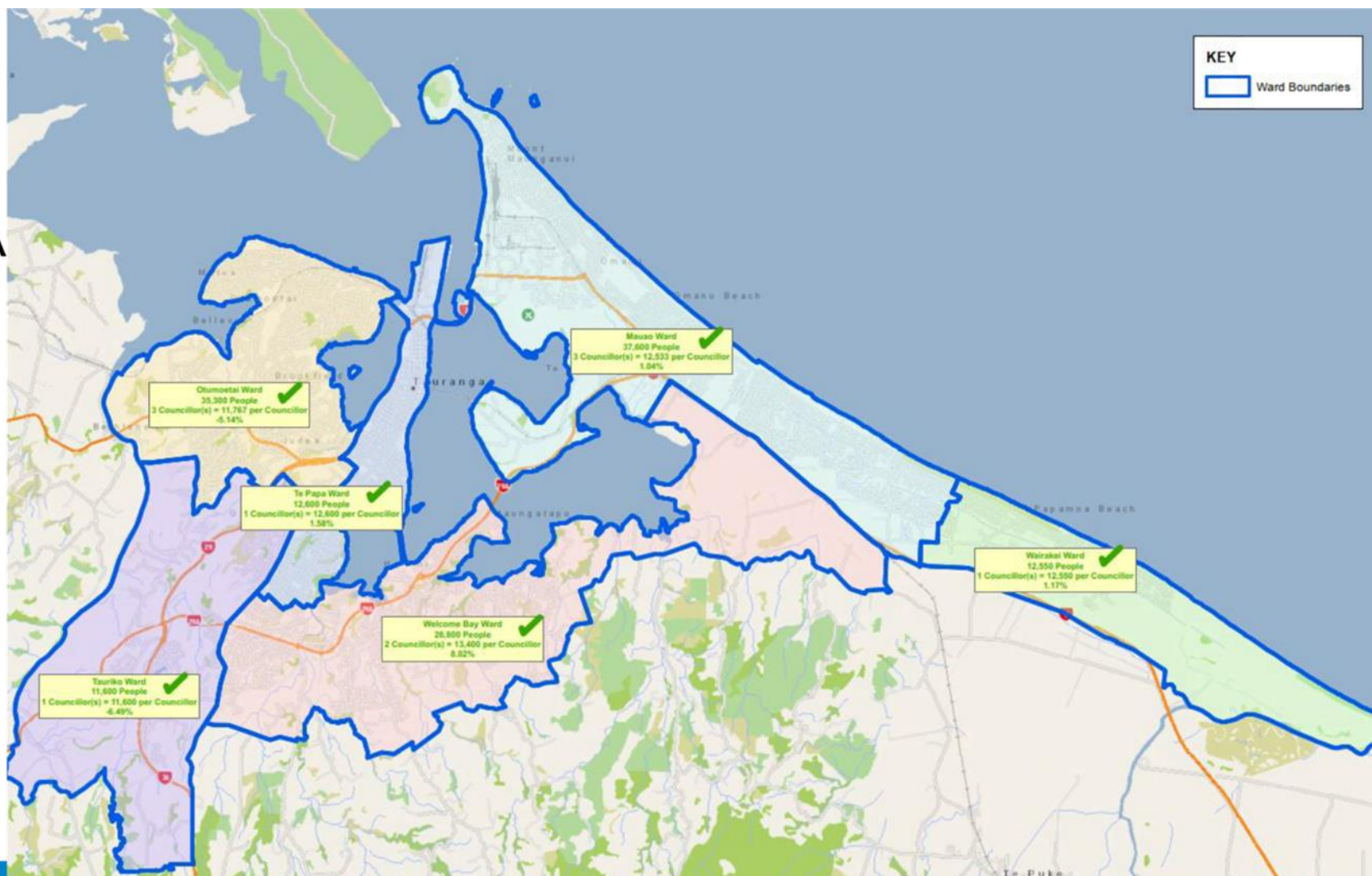
## Option 2A Wards

### Complying

12 councillors

11 councillors  
from 6 general  
wards

1 councillor  
from Māori ward



## Option 2 - Complying

Ward	Number of councillors	General Electoral Population	pop per councillor	Deviation from city av per councillor	% deviation from city av per councillor
Mauao Ward	3	37,600	12,533	129	1.04
Otumoetai Ward	3	35,300	11,767	-638	-5.14
Te Papa Ward	1	12,600	12,600	195	1.58
Welcome Bay Ward	2	26,800	13,400	995	8.02
Tauriko Ward	1	11,600	11,600	-805	-6.49
Wairakei Ward	1	12,550	12,550	145	1.17
<b>Total</b>	<b>11</b>		<b>12,405</b>		

Tauranga City Council



## Option 2B Wards

### Complying

12 councillors

11 councillors  
from 11 general  
wards

1 councillor  
from Māori ward

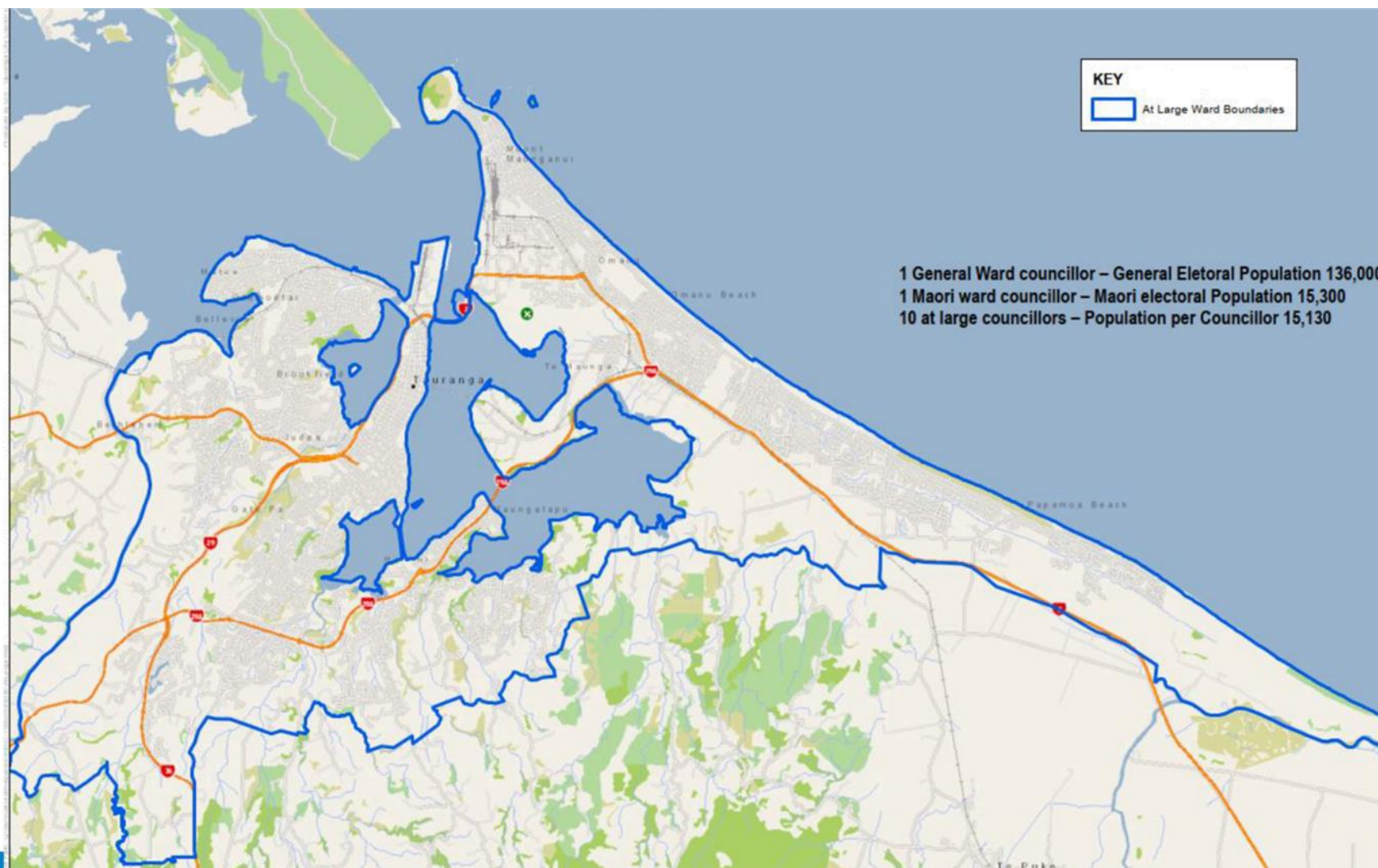
## Option 3 at large

12 Councillors

10 elected at  
large

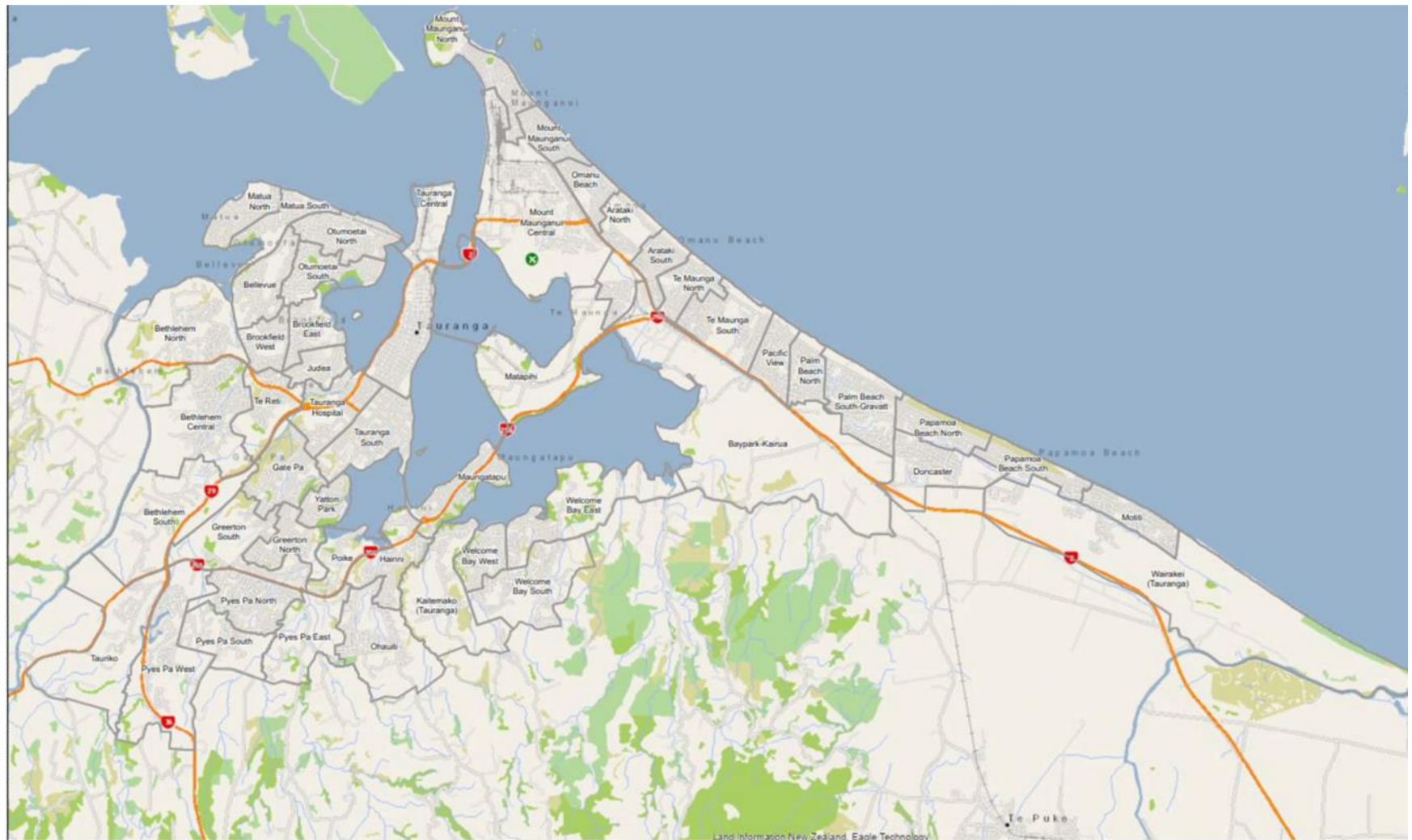
1 elected from a  
general ward

1 elected from  
Māori ward

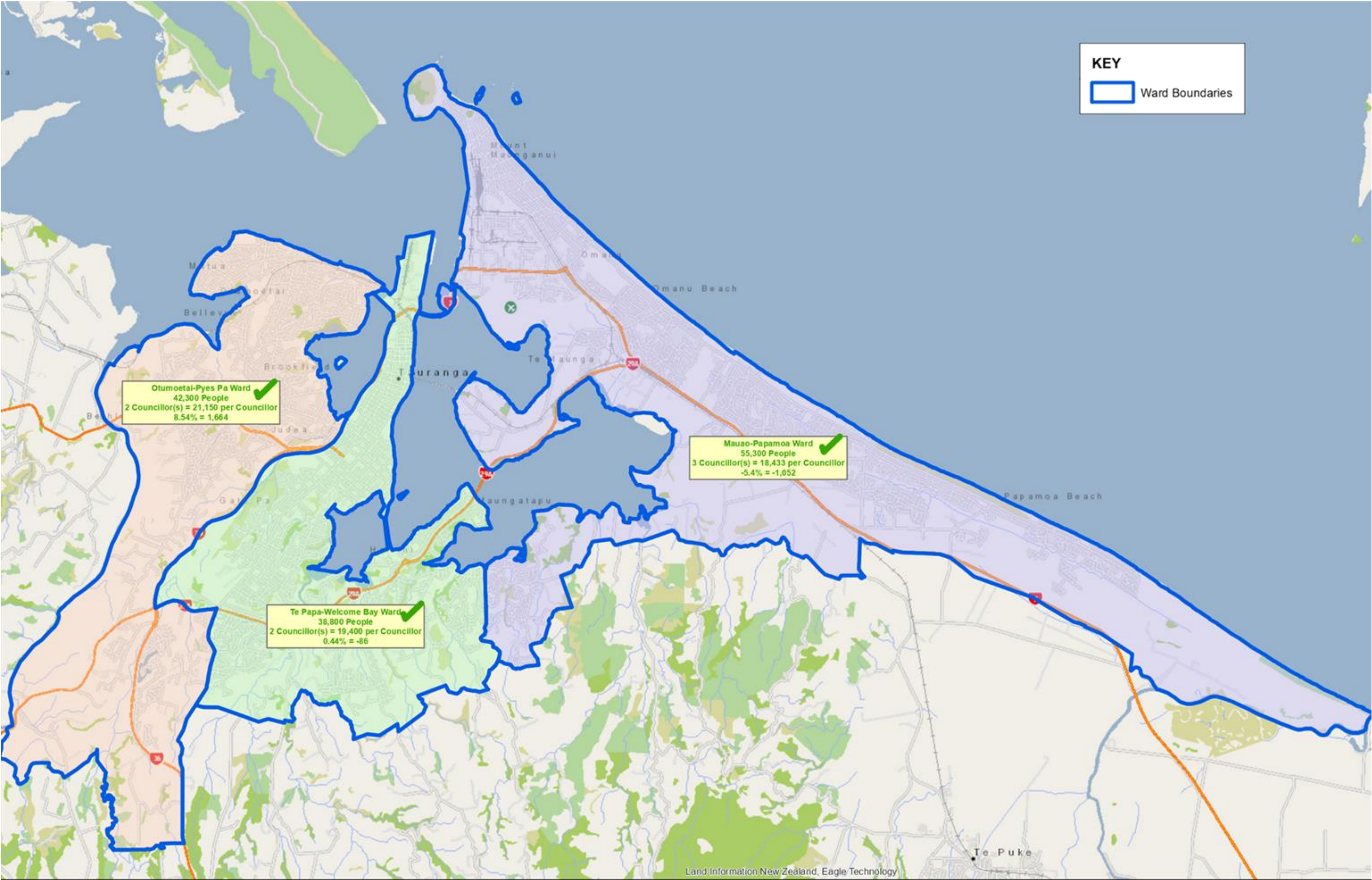


Questions?

## Suburbs







**Option 1 - Mixed model - 12 Councillors (7 elected from 3 general wards, 4 elected at large, 1 elected from Maori ward)**

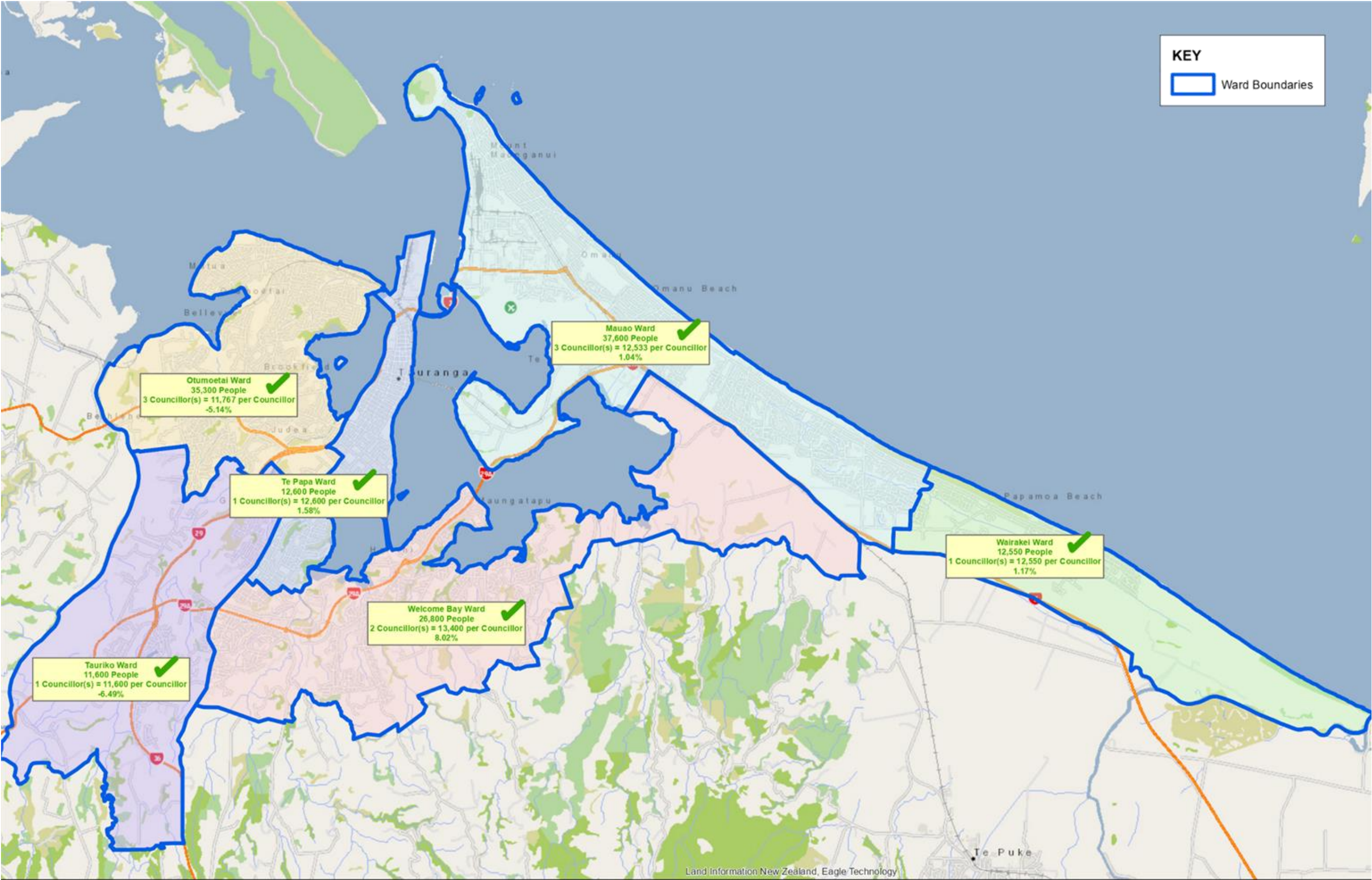
Tauranga City Council



Information shown on this plan is indicative only. The Council accepts no liability for its accuracy and it is your responsibility to ensure that the data contained herein is appropriate and applicable to the end use intended.







Option 2 – 12 councillors – wards based option (11 elected from 6 general wards and 1 elected from Maori ward)  
Tauranga City Council

Information shown on this plan is indicative only. The Council accepts no liability for its accuracy and it is your responsibility to ensure that the data contained herein is appropriate and applicable to the end use intended.