



Waiari Kaitiaki Advisory Group

CULTURAL RECOGNITION

SITE VISIT JANUARY 2024

PRELIMINARY REPORT

By Hemasphere Ltd

Contributors: Tapuika Iwi Authority

Purpose: An initiative lead by tangata whenua to block out 3 Days dedicated to include technical assessments (2 Days) and cultural connection (1 Day) for iwi and hapū.

Brief: Identify potential areas for river access and develop suitable plans to enable safe and functional access.

Aim: To secure support from corresponding landowners to develop each access point





River Access Points

Objective:

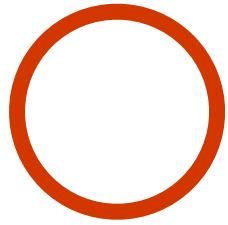
- (a) Identify points of significance for tangata whenua as priority areas – this may include wahi as identified in the interview notes, but also natural areas of priority associated with activities or deities eg the taniwha identified
- (b) Identify landholdings of each entity that may enable this work stream to materialize – that may include landholdings but also the public river margins that may be suitable for development into reserves or other mechanisms
- (c) Co-design development plans that enable access for cultural activities, kayaking and other forms of connection, platforms to support safe egress, possibly a bridge away from the main road to enable crossing but also interaction eg swimming
- (d) Enable other forms of interaction eg summer camping areas with associated assets

Assessment Criteria

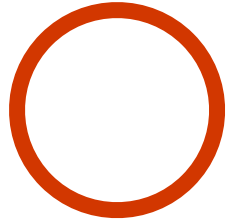
Access // Recreational // Environmental // Monitoring & Cultural Recognition options

This will include - Site Name // Location Details // Land block details // Short description // Visibility // Size // Environmental constraints // Known sites of significance // Access points // Water monitoring details // Cultural Assessment details including record of resource consents active & historical.

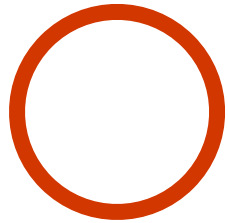
Sites of Significance



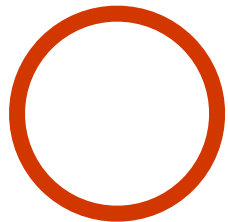
Te Rerenga - This site has access that TCC can explore through TECT. There are lakes swamps and puna there. Tapuika have exclusive access. Te Rerenga 2



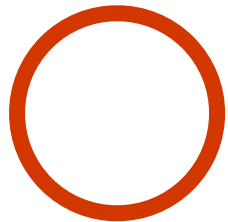
Te Ranga o Hineata - Shaw Rd This site has access on private land. The water is clear and deep in areas and there are puna and stones there in the area around Ngaingainui.



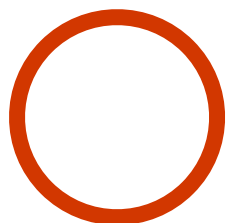
Potakataka - This area has access that TCC can explore. The awa is deep and cold in this area that has minimal erosion. It has easy access and is suitable for Tapuika to have nohoanga activities and spaces for cultural practices.



Tawakepito - Access to this site is suitable behind the marae however WBOPDC need to look into land owner permission - potential pathway leading behind the marae to the awa. Perfect opportunity to connect



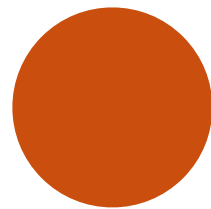
Waiari Bridge - Access available however this needs to be improved and made safer. Surrounding lands need to be explored by WBOPDC for the development of a rest area. This area is significant to



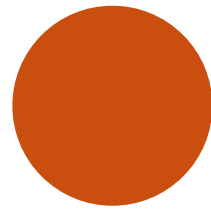
Kongutuawa ki te Kaituna - The bottom end of the awa currently has stock banks surrounding and access more challenging. WBOPDC to explore.



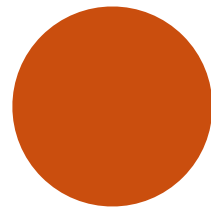
Added Sites of Significance



Te Rerenga 2 - Access from Shaw Road required

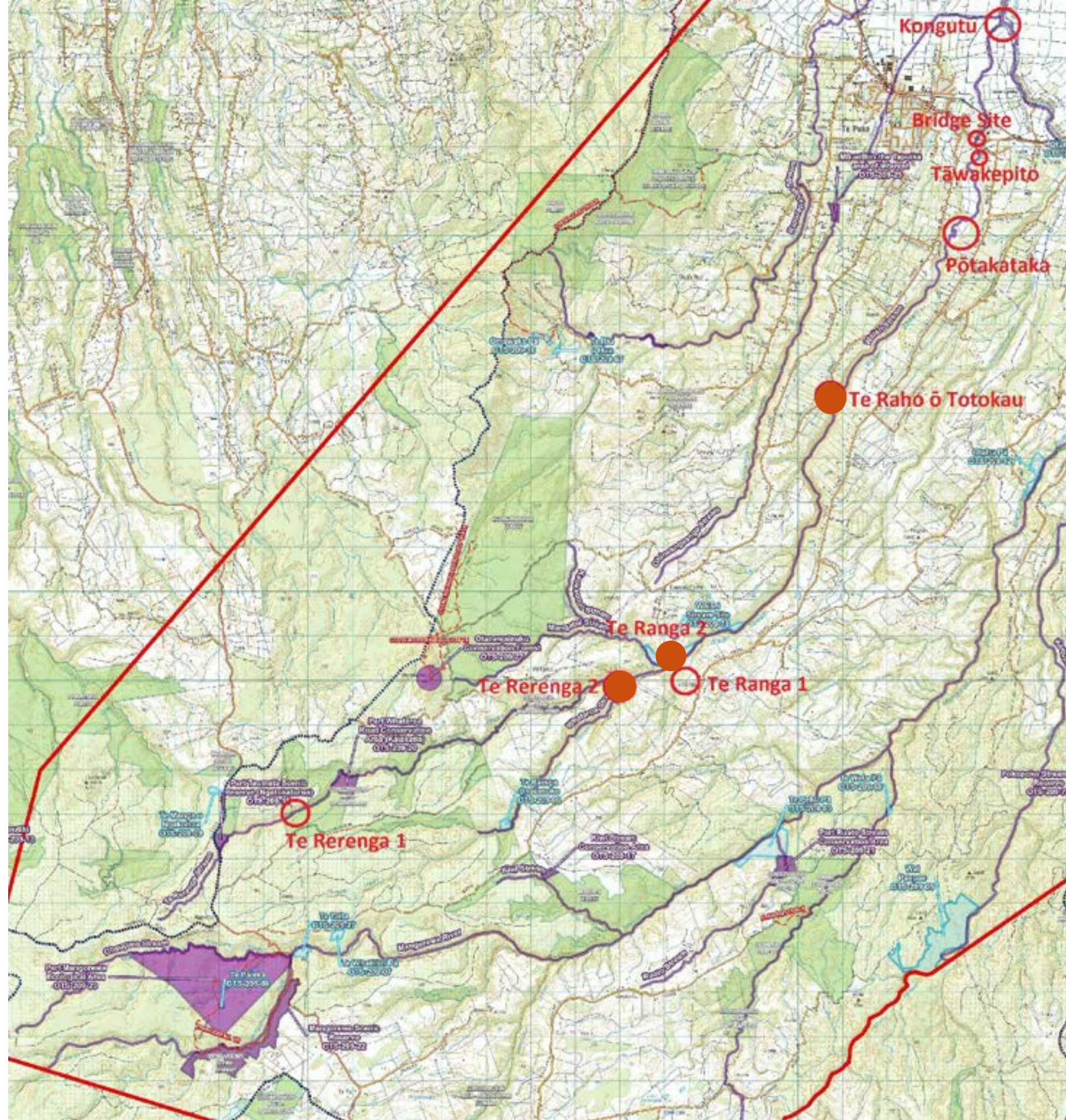


Te Ranga 2 - Access from No2 Road required



Te Raho ō Totokau - Access from No2 Road required

**Updated sites have been added to the list as per the significance to Iwi*



ATTENDEES DAY 1 & 2

Attendees Day 1 & 2

NAME	ORGANISATION	ROLE
RAPONI WILSON	TAPUIKA IWI AUTHORITY	SITE VISIT LEAD AND SITE IDENTIFICATION - CULTURAL LEAD
X 6 STAFF MEMBERS	TAPUIKA IWI AUTHORITY	MONITORS, ASSESSORS
JO'EL KOMENE	TAPUIKA IWI AUTHORITY	CULTURAL LEAD - TIKANGA
X 2 TAMARIKI	NGĀTI TUHEKE	NGĀ URI O TAPUIKA
WĀTANA WILLIAMS	TE KAPU O WAITAHA	REPRESENTATIVE
DEAN FLAVELL + MAGGIE FLAVELL	TE MARU O KAITUNA	CHAIRMAN CULTURAL LEAD
ELVA CONROY Day two	TE MARU O KAITUNA	CONSULTANT / CONTRACTOR
VANCE SKUDDER Day Two	TAPUIKA IWI AUTHORITY	BOARD MEMBER
JASON CRUMMER Day Two	WESTERN BAY OF PLENTY DISTRICT COUNCIL	SENIOR RECREATION PLANNER
JAMES CHAPLIN	WESTERN BAY OF PLENTY DISTRICT COUNCIL	DRONE OPERATOR
SAM HEMA	HEMASPHERE LTD	CONSULTANT / CONTRACTOR
X 1 STAFF MEMBER	HEMASPHERE LTD	DOCUMENT & CAPTURE



1. Te Rerenga (Site 1)

Address: TECT Park, Whataroa Road, Ngawaro 3188

Land Parcel Details: Part Section 26 Block XV
Otanewainuku SD

Assessor: TIA Environment Manager & Team

Capture: Hemasphere Ltd



Assessment & Opportunities

Access	<ul style="list-style-type: none">• Difficulty: Access to the Te Rerenga isn't easily possible from the existing track network, we did not manage to access the Te Rerenga directly.
Recreational	<ul style="list-style-type: none">• Although access to the Te Rerenga was not achieved, there is huge cultural and recreational potential in the existing track network established by the TECT Park.• Walks and camping.
Environmental	<ul style="list-style-type: none">• Mostly regenerated Rewarewa, and a mix of native and pest plants.• Lots of pest sign including possums, and ungulate damage.• Unhealthy understory.• Dried riverbed no life.
Monitoring	<ul style="list-style-type: none">• Pest monitoring and control required.• Water testing• Catchment management investigation needed.• Observational Monitoring Plots.
Cultural and Historical significance	<p>The area was traditionally known as Te Waitakahī, Taumata, Ngāwaro.</p>

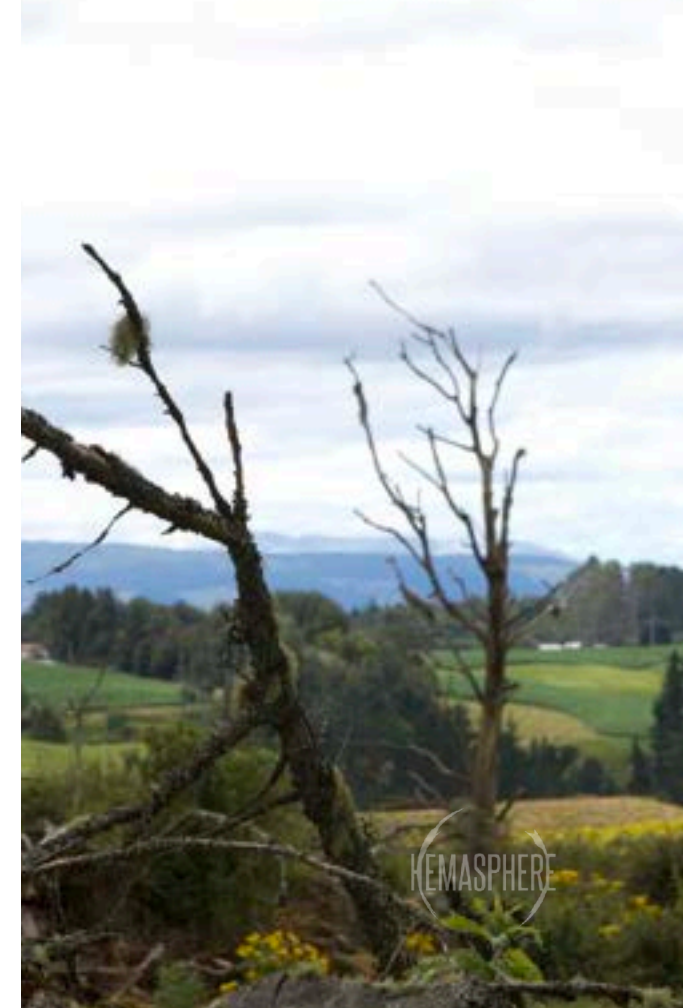
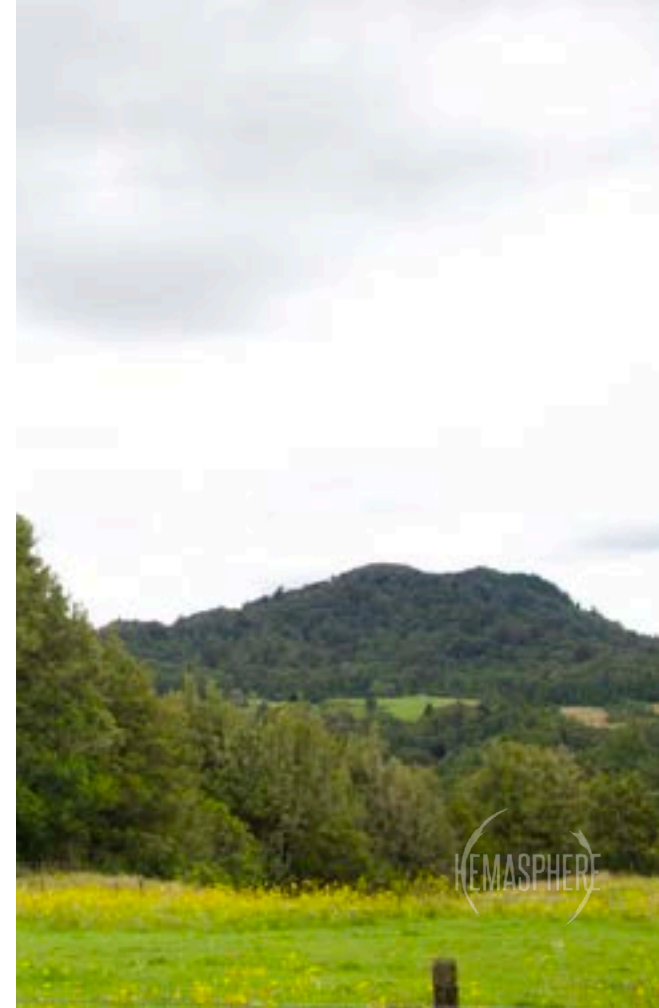
Cultural Recognition Options	<p>Option 1 - Mahi whakairo, carved pou to commemorate an event or tupuna</p> <p>Option 2 - Kohatu to signify points along the journey and key narratives on signboards</p> <p>Option 3 - Signage upgrade to incorporate cultural designs along walkways and camping sites</p> <p>Option 4 - Cultural access ways and infrastructure to areas leading to the awa</p> <p>Option 5 - Procurement opportunities for iwi in maintenance, monitoring, commercial interests and education programmes</p>
------------------------------	--



Aerial image of Te Rerenga (Site 1)

Summary

- Access for Te Rerenga 1 is through TECT Park using the Te Rerenga Tunnel Loop Track. To create a clear guided track to minimise confusion if we cut and mark the area out for our whanau it will give a better understanding on where they are needing to go. There is potential to establish a new track or redirect the current track for easier access. As we are wanting our whanau to reconnect with the awa thinking about our kaumatua, we want to make the area safer as parts of the track are difficult to access due to the terrain being slippery or steps being uneven or steep.
- It was great to reconnect with these sites and hear the historic values. Being able to listen all history that has occurred in the area creating part of our culture was amazing. Looking around and seeing the different stages of regenerating rakau it shows signs of new life forming from the older rakau that have been in place well over 20 years. Not being able to see any water flowing created a gloom over the day and you could feel the wairua shift in everyone at attended. This raised questions as to where the water is going, why it isn't flowing and what is blocking the flow. At different points on the track, it is clear to see there is a pinch higher up stream as there is no free-flowing water through Te Rerenga Stream while there are areas pooling it doesn't flow through - Raponi Wilson - TIA Pou Taiao - Environmental Manager



2. Te Rerenga (Site 2)

Address: TECT Park, Whataroa Road,
Ngawaro 3188 (through private land)

Land Parcel Details: Ngatipahiko B2B Block

Assessor: TIA Environment Manager & Team

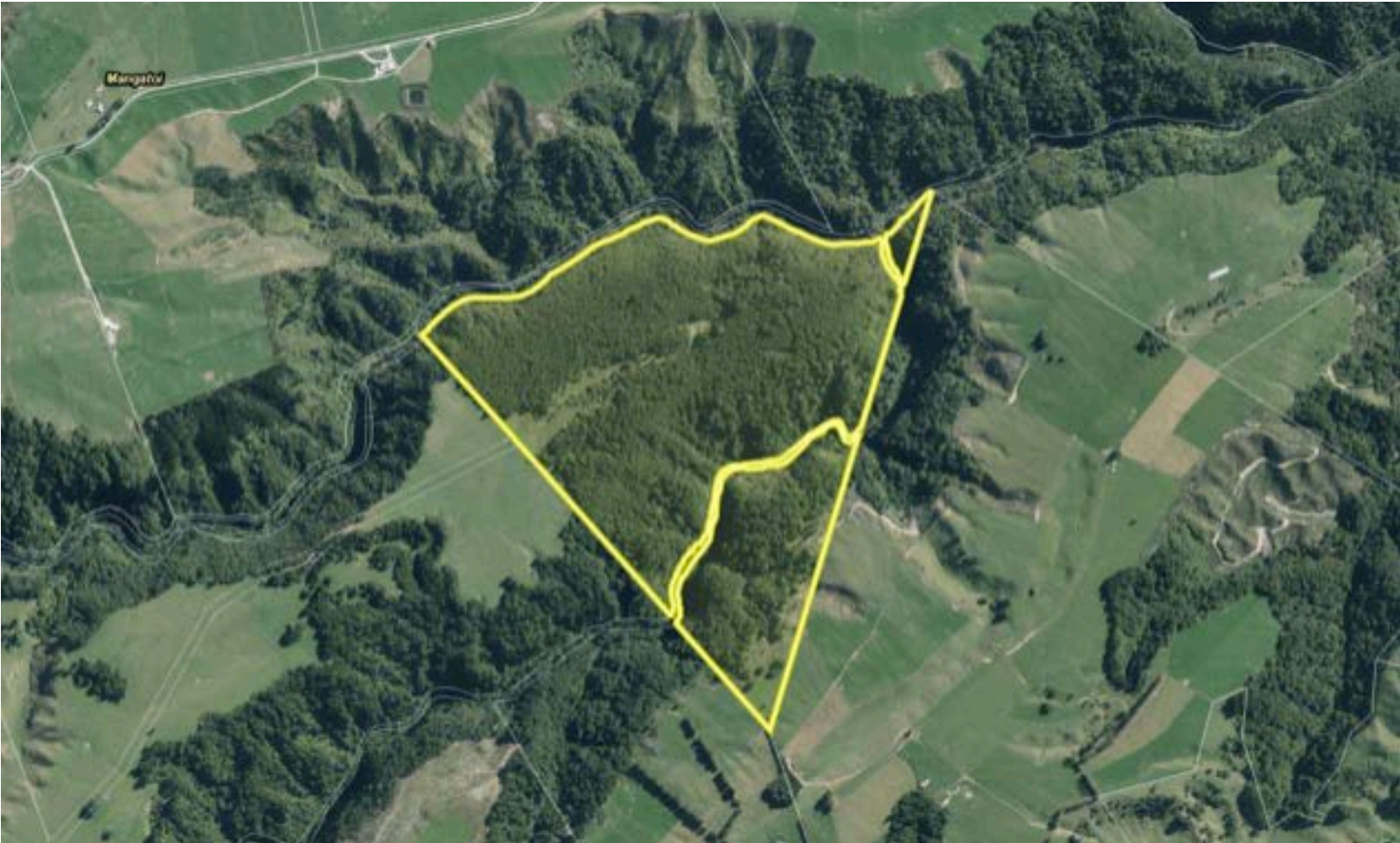
Capture: Hemasphere Ltd



Assessment & Opportunities

Access	<ul style="list-style-type: none">• Difficulty: Access is difficult due to the terrain and being landlocked from private blocks.
Recreational	<ul style="list-style-type: none">• Not a lot of recreational potential due to the difficult and unsafe terrain.
Environmental	<ul style="list-style-type: none">• Mostly regenerated Rewarewa, and a mix of native and pest plants.• Lots of pest sign including possums, and ungulate damage.• Dried riverbed no life.•
Monitoring	<ul style="list-style-type: none">• Pest monitoring and control required.• Water testing• Catchment management investigation needed.• Observational Monitoring Plots.
Cultural and Historical significance	<p>The area was traditionally known as Heruiwi, a significant pā site that overlooked the convergence of the Te Rerenga and the Whataroa rivers to create the Waiari.</p>

Cultural Recognition Options	<p>Option 1 - Mahi whakairo, carved pou to commemorate an event or tupuna</p> <p>Option 2 - Kohatu to signify points along the journey and key narratives on signboards</p> <p>Option 3 - Signage upgrade to incorporate cultural designs along walkways and camping sites</p> <p>Option 4 - Procurement opportunities for iwi in maintenance, monitoring, commercial interests and education programmes</p>
------------------------------	--



Aerial image of Te Rerenga (Site 2)

Summary

- Due to access restrictions, we were not able to reach the point we intended to go to due to different landowners. We managed to make it past one locked gate with the help of Steve who owns Huntaway Horse treks and is the first landowner.
- By meeting Steve and talking with him this is where we were able to gain access to the Huntaway Horse trek property, this is where we found out there is more than one landowner that we will need to speak with to gain access to the point we are wanting to reach. Although we did get hit a wall Steve allowed our kaimahi access through his property to head down towards the awa.
- The terrain heading down to the awa is not suitable for the average person. It was identified as a difficult, steep and rocky site. Although this was not the original area, we wanted to view this was a starting point. If we cannot gain access through both landowners, we have started a relationship with Steve and hope to continue this relationship. If this is going to be used as an entrance point to the site, there will need to be clear tracks cut with ropes being installed to create a safer hike up and down the ridge line.
- Once the boys had reached the bottom of the ridge to where the awa should be flowing through they identified it to be bone dry. The old riverbeds are dried out and dusty which shows there have been no signs of flowing water through there in years.
- Seeing how dry the awa is created a lot of sadness in the team and they felt defeated after hearing all the different korero around this stream thriving in the past to what it is now.



3. Te Ranga ō Hineata

Address: Te Ranga School 1492 Te Matai Road, Te Ranga 3188

Land Parcel Details: Lot 1 DPS 75831

Assessor: TIA Environment Manager & Team

Capture: Hemasphere Ltd



Assessment & Opportunities

Access

- Difficulty: Access is difficult due to the steep terrain and being landlocked from private blocks, Access for monitoring purposes a priority, some access agreements with land owners and light infrastructure required to make it safe.

Recreational

- Not a lot of recreational potential due to the difficult and unsafe terrain.

Environmental

- Farmland with small 20 – 50 meter riparian buffer of native mostly naturally regenerated, includes a lot of Tōtara and Rewarewa.
- Lots of pest sign including possums, and ungulate damage.
- Healthy river below.
-

Monitoring

- Water species monitoring including Koura, tuna and water invertebrates.
- Water testing
- Observational Monitoring Plots.
- Steady source of water from the Mangatoī tributary, water appears very clean.

Cultural and Historical significance

Te Ranga ō Hineata is an old garden and settlement that was occupied by predominantly Tapuika and Waitaha. Potential for a recognition project to occur with the nearby school.

Cultural Recognition Options

Option 1 - Mahi whakairo, carved pou to commemorate an event or tupuna

Option 2 - Kohatu to signify points along the journey and key narratives on signboards

Option 3 - Signage upgrade to incorporate cultural designs along walkways and camping sites

Option 4 - Procurement opportunities for iwi in maintenance, monitoring, commercial interests and education programmes



Aerial image of Te Ranga ō Hineata Site

Summary

- To access the entrance for this site we are needing to go through private property. Peter Marks is the landowner that we contact to gain access through his land. Driving along fence boundary of the farm it will take you down to a small opening that is used to get to the cliff face. Once reaching the entrance the track is not formed so it is an uneven and slippery surface gradually getting steeper the more you go towards the cliff face.
- After making it to the bottom and seeing the water flowing through in abundance you could feel the wairua shift. There was a strong sense of reconnection after seeing how dry Te Rerenga was then heading down the road to Te Ranga ō Hineata and seeing it thriving.
- It was identified the track down is steep and slippery but with clear marking, cutting and a few small infrastructure items put in place it will help getting to the bottom of the cliff. This site will be a great monitoring spot however with access through private property and how the terrain is formed it is not ideal for recreational purposes.



4. Pōtakataka

Address: Te Matai Road Access way, Te Puke

Land Parcel Details: Multiple owners

Assessor: TIA Environment Manager & Team

Capture: Hemasphere Ltd



Assessment & Opportunities

Access

- Difficulty: Safe access quite easy, low land farming and orchard land, some permission agreements required with landowners.

Recreational

- Great potential for swimming spots.
- Easy safe access.

Environmental

- Low lying farms and orchards.
- Lots of weeds on the river margin.
- Lots of erosion.
- Shallow wide river points.

Monitoring

- Water species monitoring including Koura, tuna and water invertebrates.
- Water testing.
- Observational Monitoring Plots.
- Very full water appears clean, slightly murky, needs monitoring.

Cultural and Historical significance

- Site known for the multiple swirling waters and river bends.
- Lots of bends that harbour Kai such as water cress and tuna.
- Sits below multiple pā sites.

Cultural Recognition Options

Option 1 - Mahi whakairo, carved pou to commemorate an event or tupuna

Option 2 - Kohatu to signify points along the journey and key narratives on signboards

Option 3 - Signage upgrade to incorporate cultural designs along walkways and camping sites

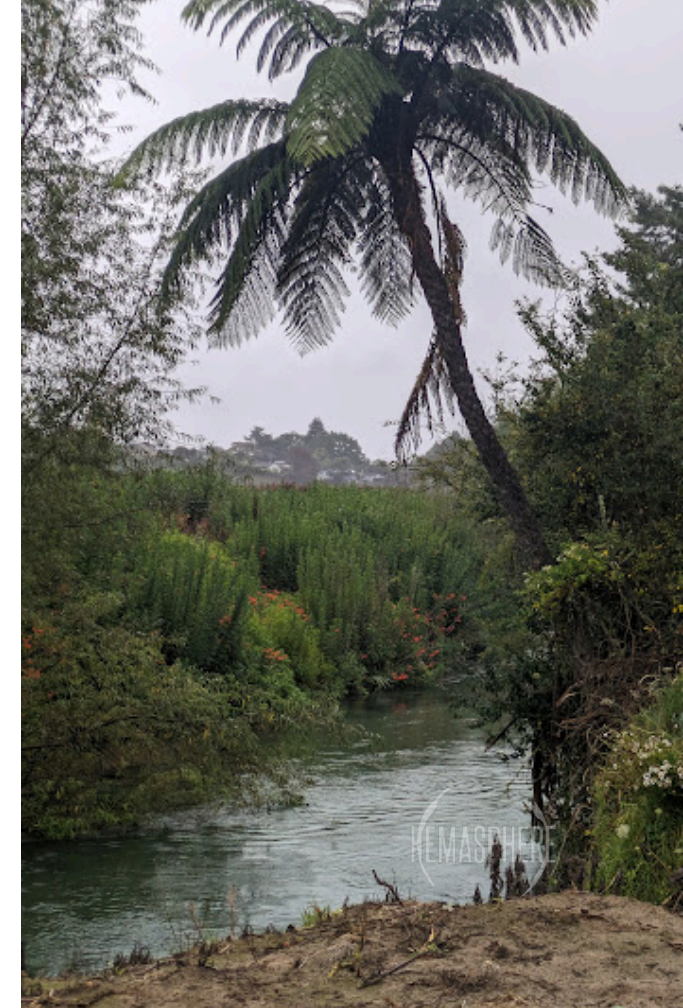
Option 4 - Procurement opportunities for iwi in maintenance, monitoring, commercial interests and education programmes



Aerial image of Pōtakataka Site

Summary

- This area is partially accessible. We were able to reach the awa using the paper road owned by TCC however, to get to the area we were wanting to assess crosses over a kiwifruit orchard. We could not contact the owner to gain access, so we stayed upstream from the site. There is potential there to create a relationship with the landowner, so we can cross through to get to the area we are wanting to.
- Although we didn't make it to the point we were wanting to go, looking over the site we were able to identify a few different things that will need to be done. Pest plant control will need to happen as it is very noticeable, there are multiple different weeds present along the margins in full force. If we are looking into removing the pest plant species, we will need to do riparian planting as it was very noticeable the pest species are what is holding the banks together.
- The site itself is accessible and we don't necessarily need to cut tracks. By using paddle-boards, we can use the awa to get to the site as an option but, if we build a relationship with the orchard owner this site will be even easier to access.
- There is a lot of history that has occurred along the awa that can be shared with whanau and this area we are can easily monitor the site for water quality, species, flora and fauna. This site can also be used for recreational purposes, there are parts of the awa that can cater to all being shallower in some areas and deeper in others.



5. Tāwakepito

Address: Te Matai Road Private Owner access

Land Parcel Details: Lot 7 DP 373042

Assessor: TIA Environment Manager & Team

Capture: Hemasphere Ltd



Assessment & Opportunities

Access

- Difficulty: Safe access quite easy, low land farming and orchard land, some permission agreements required with landowners. Feasible tracks with some light infrastructure securing traditional access for both Tawakepito and Makahae Marae.

Recreational

- Potential swimming site.
- Camping site and kai site.

Environmental

- Low lying farms and orchards.
- Lots of weeds on the river margin.
- Cattle grazing the stop bank.
- Deep narrow point on the river.

Monitoring

- Water species monitoring including Koura, tuna and water invertebrates.
- Water testing.
- Observational Monitoring Plots.

Cultural and Historical significance

- A traditional access point for Te Kahika pā
- Lots of historical significance of this site.

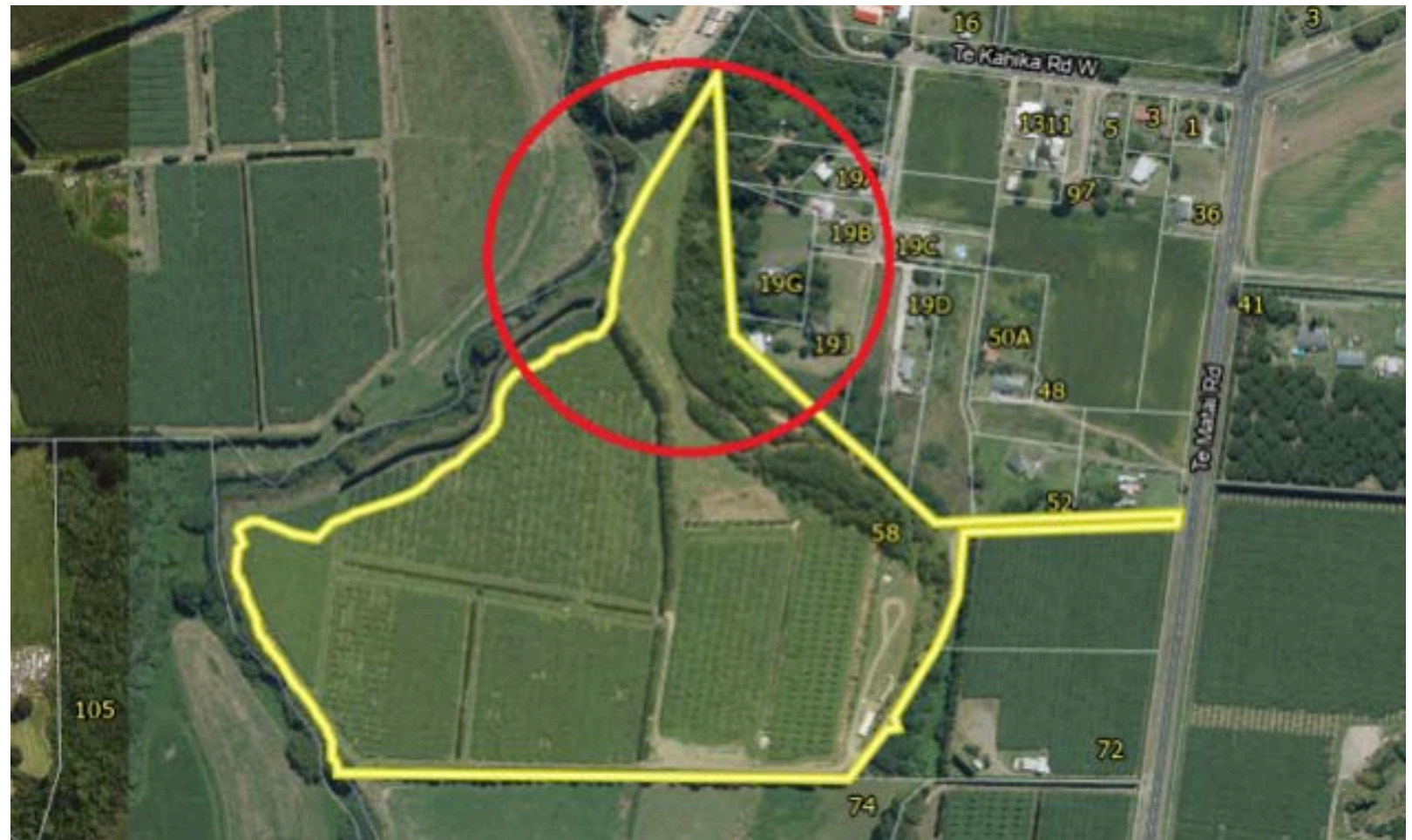
Cultural Recognition Options

Option 1 - Mahi whakairo, carved pou to commemorate an event or tupuna

Option 2 - Kohatu to signify points along the journey and key narratives on signboards

Option 3 - Signage upgrade to incorporate cultural designs along walkways and camping sites

Option 4 - Procurement opportunities for iwi in maintenance, monitoring, commercial interests and education programmes



Aerial image of Tāwakepito Site

Summary

- Accessing this area can be completed two ways. The first way is through private land, this is an active kiwifruit orchard that creates road access being available to drive down to the awa. The second way to access the awa is by heading down the hill behind Tāwakepito Marae, although this is a way to access the awa there is no clear track.
- After assessing the site, we can identify different ways we can cut and mark out a clear track as a safer way to get to the awa. If we start at the bottom of the hillside, we will be able to safely cut and mark clearly a track compared to going over the top as there is uneven surface and pest plants growing over. With this being in mind we are wanting to create this track easily accessible and walkable for all ages.
- If we build a strong relationship with the landowner, we may be able to collaborate to help with riparian planting and the removal of pest plants as they are very noticeable along the banks. There is the potential to create an opportunity for our whanau to reconnect with the awa while removing the pest plants or helping to plant out the riparian margin.
- This area is a perfect spot for recreational purposes, it is a safer place for tamariki to swim without having to cross a busy road. This site has the potential to have a jumping platform installed for bombing, diving, launching waka, teaching our tamariki how to swim against the current there is so much potential for this area.
- This is another area that has a lot of history as this is an area our tupuna would use daily being so close to the marae.



6. Waiari Bridge

Address: The Pacific Highway, Te Puke

Land Parcel Details: N/A

Assessor: TIA Environment Manager & Team

Capture: Hemasphere Ltd

Assessment & Opportunities

- Access

- Access is easy via the Te Ara Kahikatea track or via roadside, however quite dangerous especially for kids given the proximity to the highway.
- Recreational

- Current well used swimming site can be dangerous due to the road.
 - Camping site and kai site.
- Environmental

- Lots of public walkers on nearby track.
 - Stormwater discharge.
 - River edge is quite eroded due to swimming and lack of riparian vegetation.
 - River is very shallow at this point.
 -
- Monitoring

- Water species monitoring including Koura, tuna and water invertebrates.
 - Water testing.
 - Observational Monitoring Plots.
 - Water depth and monitoring of stormwater discharge.
 -
- Cultural and Historical significance

- Is near multiple historically significant sites including, urupa, a Taniwha lair and an old mill.

- Cultural Recognition Options

Option 1 - Mahi whakairo, carved pou to commemorate an event or tupuna

Option 2 - Kohatu to signify points along the journey and key narratives on signboards

Option 3 - Signage upgrade to incorporate cultural designs along walkways and camping sites

Option 4 - Procurement opportunities for iwi in maintenance, monitoring, commercial interests and education programmes



Aerial image of Waiari Bridge Site

Summary

- As this has been an active swimming spot for years this site it is easily accessible. If you are wanting to access this safely there is a small area where you can park near the bridge, another area for parking is on Landscape Road opposite the squash club using the Kahikatea walking track that is open to public.
- While visiting the site it was clear to see species present floating around in the pools near the edge of the banks. We didn't identify the area to be overly populated with pest plants compared to upstream, but it could do with some riparian planting to maintain the upkeep of the banks. This is a site where we will be able to monitor water quality, species, flora and fauna.
- This area holds a lot of memories for whanau as there have been generations on generations swimming in this area. Being close to the Makahae marae this is an active swimming hole for tamariki to go and swim, however we have noticed it is very unsafe to access as you are needing to cross the road which is one of the busiest roads in Te Puke.
- We have identified a couple of ways we can make this site safer and easily accessible from the marae by building a light infrastructure underneath the bridge so tamariki can cross under safely, but we can incorporate this into being a jumping platform for recreational use.



7. Kongutu ki te Kaituna

Address: Te Puke Waste Water Treatment Plant - Gordon Street, Te Puke 3119

Land Parcel Details: N/A

Assessor: TIA Environment Manager & Team

Capture: Hemasphere Ltd



Assessment & Opportunities

Access

- Difficulty: Access is easy via the wastewater treatment plant, although it is quite a walk it can be driven.

Recreational

- Swimming site

Environmental

- All farmlands, river heavily stop banked.
- Wastewater treatment discharge.
- No riparian natives but instead lots of weed including Willow.
- Pretty poor quality water comparative from the top end, just as a visual observation.

Monitoring

- Water species monitoring including Koura, tuna and water invertebrates.
- Water testing.
- Observational Monitoring Plots.
- Water depth and monitoring of stormwater discharge.

Cultural and Historical significance

- Lots of stories exist for this site, including it sustaining multiple generations of occupation.
- Establishment of Flax trade and was a steam boat trade route.
- Unique Island gardening and fishing.

Cultural Recognition Options

Option 1 - Mahi whakairo, carved pou to commemorate an event or tupuna

Option 2 - Kohatu to signify points along the journey and key narratives on signboards

Option 3 - Signage upgrade to incorporate cultural designs along walkways and camping sites

Option 4 - Procurement opportunities for iwi in maintenance, monitoring, commercial interests and education programmes



Aerial image of Kongutu ki te Kaituna Site

Summary

- This area is accessible for an average walker. Accessing this site, you will need to jump a few fences when walking down however, it does connect to the Kahikatea loop track. Once arriving we were able to view different access points where there will be the potential to create relationships with the surrounding landowners so we can use their roads for vehicle access. This is an area where it is more than ideal to monitor for water quality, species, and flora/fauna. Scanning over the area this is where the Waiari meets with Parawhenuamea Stream before heading into Kaituna creating a triangle.
- This area could do with some serious riparian planting as it was noticeable there has been stock along the stop bank and this will help towards filtering any runoff before it reaches the awa. With riparian planting this will also help stabilise the banks and create shade over the awa for any species present. This will also help to keep weeds and pest plants at bay.
- Recreationally this is an area that will be ideal for swimming, launching of waka, paddle boarding and more. There is potential to build a jumping platform for bombing. Along with this there are different korero around this area and surrounding areas making this site have historic and cultural significance.

Summary

Overall the site visits were both technical and inspirational as the group were able to be apart of preliminary assessments conducted safely and culturally appropriate. Tapuika and Waitaha members were present with the help and expertise provided by Ngāti Tuheke leader and Tapuika Iwi Authority Environmental Manager Raponi Wilson and his team and Ngāti Tuheke leader and Te Maru o Te Kaituna Chairman Dean Flavell.

The report acts as a record that tangata whenua were able to have an opportunity to visit these sites, some for the first time and others a return visit however a more culturally focused visit is planned for the near future. Access to the first four sites proved to be very difficult as the report shows, there is some work to do to open up the doors for access with the help of an iwi and council approach. The last three sites provided good access and the group were able to experience what potential recognition could be like at each of these.

With the preliminary work done Tapuika Iwi Authority noted that further visits are required to eventually have access to the awa at the more difficult sites and to capture findings. Having the ability for tangata whenua to conduct a Cultural Connection site visit is also the next phase. To have iwi gather and meet at these sites, bring visitors and have regular connection with the awa and whenua is the ultimate aspiration. The cultural options outlined in the report are a

baseline only at this stage with more investigative work required.

The report will enable decision makers to prioritise the delivery of the cultural recognition initiatives at each of these sites and prioritise the resourcing of activities, as this was previously not possible without the actual connection and assessment from an access, environmental and cultural lens.

The recommendation from Iwi reps to the Kaitiaki Waiari Advisory Group is as follows:

- 1) Council support the revisit approach and cultural visit by tangata whenua to sites that were not previously accessible and continue with the assessment.**
- 2) A completed report by June 5th 2024 to be presented back to the KWAG to include these additional assessments and cultural information.**
- 3) Resourcing and planning for delivery of cultural recognition at each of these sites to be the topic of priority and discussion at all KWAG meetings in 2024 as a continual commitment to tangata whenua.**

KWAG Iwi & Tangata Whenua Representatives

SCHEDULE DAY 1 & 2

SCHEDULE Day 1 - Tuesday 16th January 2024

	SITE	DETAIL
8:00 - 8:30 AM	MAKAHAE MARAE	MEET UP - DAILY TOOLBOX (H&S, KARAKIA)
8.30AM - 10.00AM	SITE 1 (First Access) – Te Rerenga Wairua	Meet at TECT Park entrance, and take track walk down to the Te Rerenga Stream for the first access point and complete assessment template. Approx. 45 mins to 1 hour.
10.00AM	Tect Car Park	Morning Tea
10.00AM – 11.30AM	SITE 1 (Second Access) – Te Rerenga Wairua ki Heruiwi	Travel down Whataroa road vehicle, weather and terrain dependant. Scope feasibility for site and river access.
12.30PM – 1.00PM	Tect Car Park	Lunch
1.00PM – 2.30pm	SITE 2 (First Access) – Te Ranga School	Travel down behind Te Ranga School test out river access. Complete Assessments.
3.00pm - 3.30pm	MAKAHAE MARAE	FINISH UP - DEBRIEF (KARAKIA)

SCHEDULE Day 2 -Wednesday 17th January 2024

	SITE	DETAIL
8:00 - 8:30 AM	MAKAHAE MARAE	MEET UP - DAILY TOOLBOX (H&S, KARAKIA)
8.30AM - 10.00AM	SITE 2 – Pōtakataka	Meet at the Te Matai Access entrance for the Water take site. Complete Assessments.
10.00AM	Tāwakepito	Morning Tea
10.00AM – 11.30AM	SITE 3 – Tawakepito	Drive down the drive was at 58 Te Matai Road. Complete Assessments.
12.30PM – 1.00PM	Tect Car Park	Lunch
1.00PM – 2.30pm	SITE 3 and 4 – Waiari Bridge Site and Kongutu ki te Kaituna	Stop at Waiari Bridge and complete assessments. Then drive to Wastewater Treatment Plant and complete assessments.
3.00pm - 3.30pm	MAKAHAE MARAE	FINISH UP - DEBRIEF (H&S, KARAKIA)

Another One Day site visit (TBC) will be set aside for Iwi and Hapū.