



# 15<sup>th</sup> Avenue to Welcome Bay – Overview

January 2025



# Key Problems to Address and Benefits Received

## Problems on the corridor

### Movement (40%)

Limited routes across the Tauranga harbour, a growing population and lack of local employment, education, goods and services has resulted in congestion at peak times. This is causing travel delays and increased carbon emissions.

### Transport choice (30%)

A lack of priority and poor-quality infrastructure for active and public transport modes has resulted in car-dependent communities. This makes it difficult to achieve carbon emissions and mode shift targets.

### Access (30%)

High traffic volumes and reduced access to and across the corridor following the construction of transport projects has severed communities. This impedes access to key destinations (schools, maraes and shops) and reduces social wellbeing and connectivity.

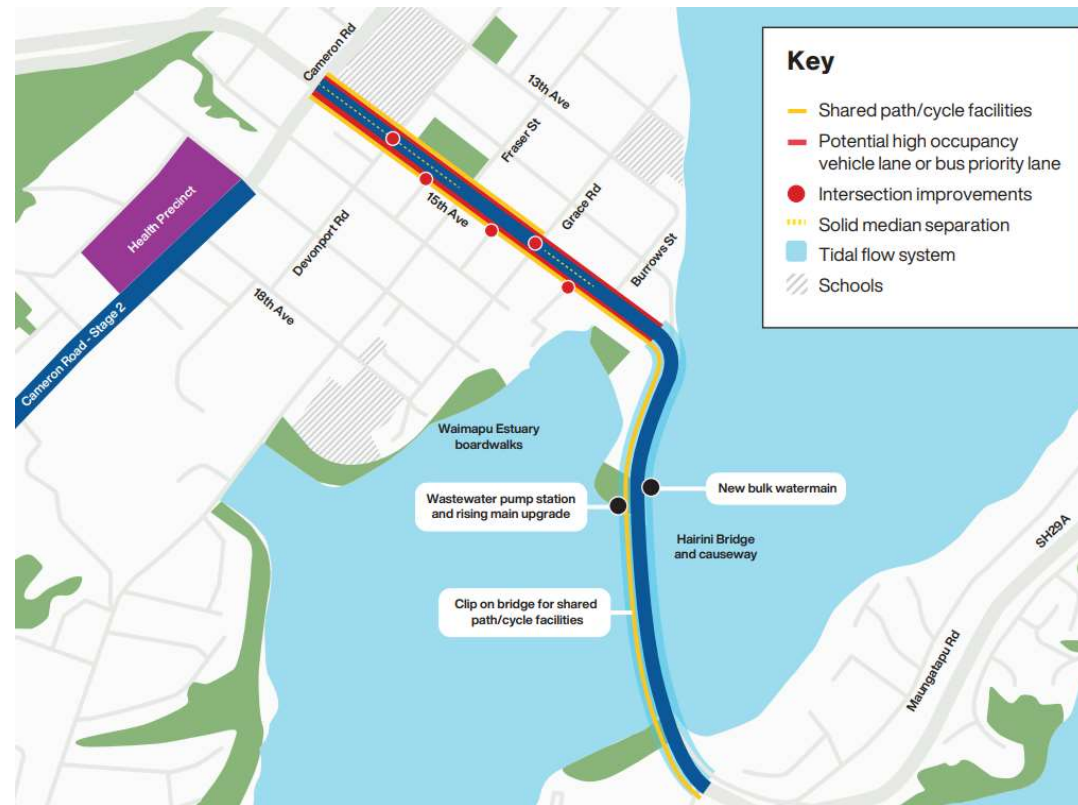
## Benefits from addressing the problems

- More efficient movement of people and goods, and more certainty of journey time. Increase proportion of people within 30mins of social and economic opportunities.
- Improved transport choice, providing reliable options to a wider range of users
- Improved quality of place and better accessibility to the natural, cultural and built environment

Resolving the problems along the corridor, and in particular the congestion issue, aligns strongly with the Governments priorities for land transport (economic growth, productivity).

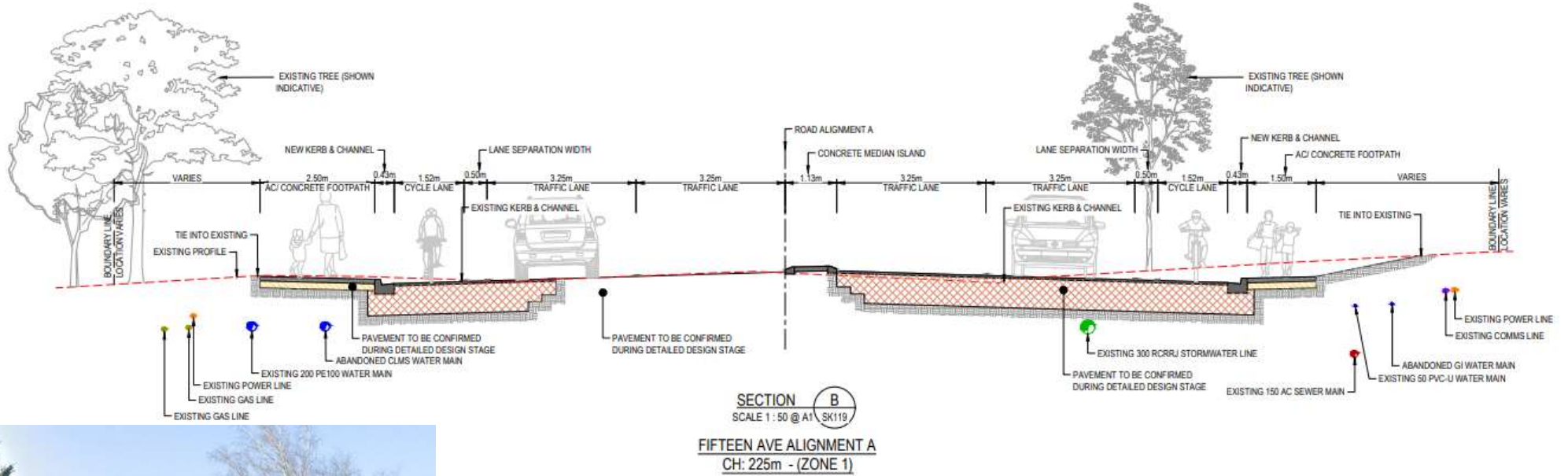
## 15<sup>th</sup> Ave Turret to Welcome Bay - Scope

- Completing the four-laning of 15th Avenue between Cameron and Burrows Street.
- Three-laning of Turret Road, the Hairini Bridge and causeway. New 'clip-on' shared path on the existing bridge, to allow the existing bridge deck width to be allocated for three traffic lanes.
- A tidal-flow (dynamic lane) system along Turret Road. Options to utilise for T2 and HOV.
- Services and utilities replacement and upgrades
- Pavement Renewal
- James Cook Dr intersection upgrade



# Proposed Cross-section 15<sup>th</sup> Avenue

Cross-section 15<sup>th</sup> Ave beside Devonport Rd including services and pavement



Road profile photo 15<sup>th</sup> Ave beside Devonport Rd

# Proposed Cross-section Hairini Bridge 3lanes + shared path clip-on

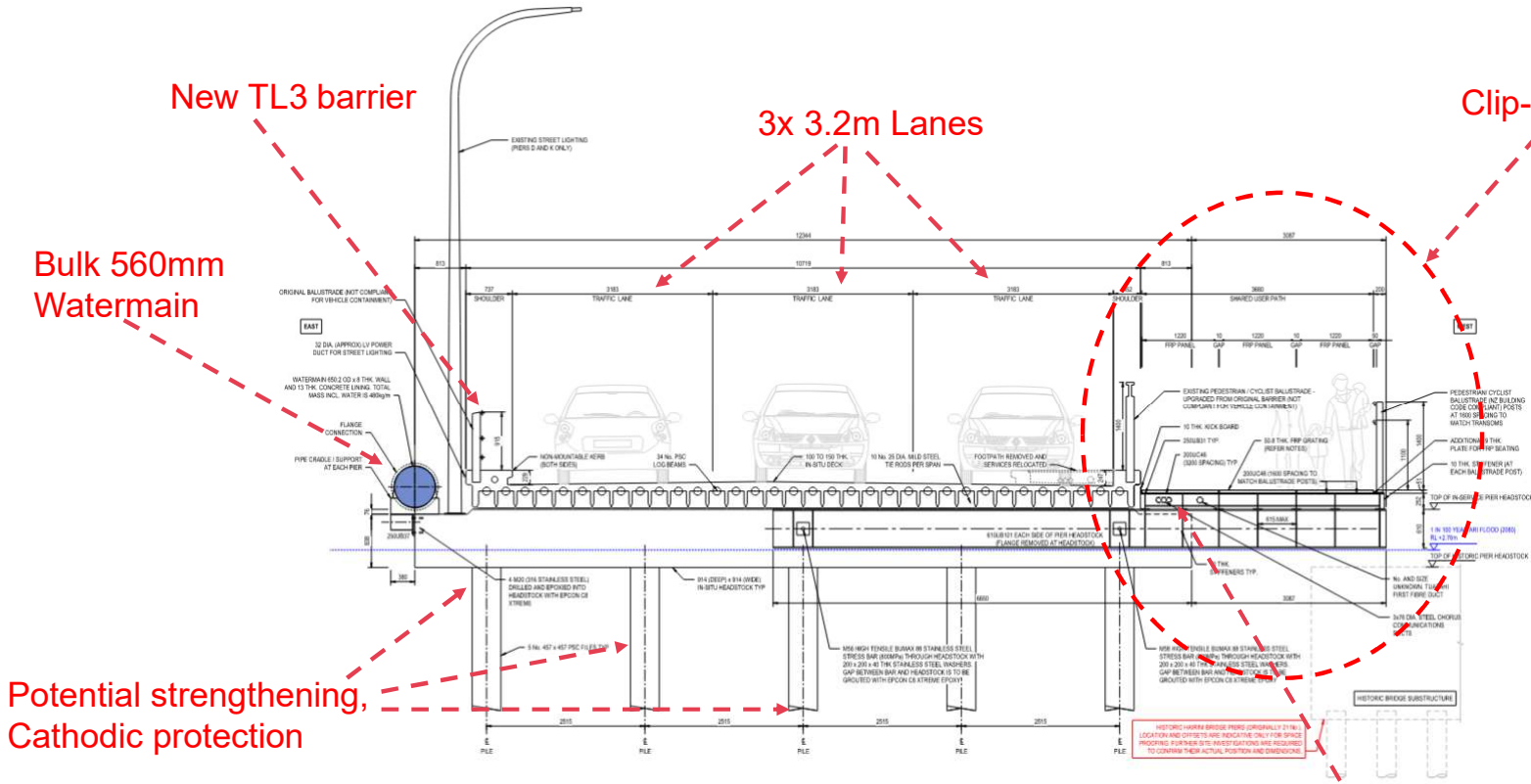
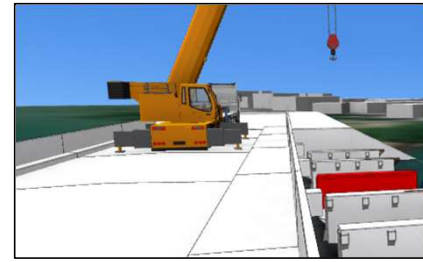


Figure 12 SUP Option 1 – Typical Elevation

Hairini Bridge profile



Concept of clip-on construction



# Constructability Review, Risk Review, Cost Estimate update

## Constructability Review and gap analysis

- Construction sequence options reviewed. Assessed concept drawings against onsite constraints. Delivery Risk Review undertaken. Updated Cost Estimate (Base, P50, P95)

## Financials and Co-Funding Request

- Total Project Estimate = \$170M (P95)
- Current co-funding requests are \$10.28m for pre-implementation and \$79.7m for implementation both at 51% FAR.
- Future co-funding requests may be made for additional Pavement renewals (\$12.3m) or if updated cost estimate exceed current co-funding approvals.

## High level Risk

- Hairini Bridge structural and seismic capacity (Go/No-Go)
- Traffic and area disruption vs efficient construction
- Utilities alterations, site constraints (width) and coordination
- Cost reconciliation approval from NZTA



Tidal Flow example,  
Redoubt Rd, Auckland

# Project Next Steps

## The key next steps for the project are:

- **Feb 25** – NZTA endorse SSBC and fund Pre-Implementation
- **Feb-Mar 25** – TCC endorse procurement approach
- **Feb-July 25** - Prepare Procurement documentation, Tender & Evaluate
- **Aug 25** - Contract Award to Design/Constructor consortium
  
- **Aug 25** - Begin detailed design. Hairini bridge structural assessment is Step 1
- **End 25/26** – Go/No Go stage for Bridge. (Pass; Realise strengthening risk; Fail and No-Go due to bridge load requirements)
  
- **Early 26** – Start Design of all other work
- **Mid 26** – Community Engagement on design
- **End 26/Early27** – Go/No Go Construction (confirm scope = budget). Construction start

