



# AGENDA

## **Waiāri Kaitiaki Advisory Group meeting Wednesday, 12 March 2025**

**I hereby give notice that a Waiāri Kaitiaki Advisory Group meeting will  
be held on:**

**Date: Wednesday, 12 March 2025**

**Time: 9.30am**

**Location: Tauranga City Council Chambers  
Ground Floor Meeting Room  
306 Cameron Road  
Tauranga**

*Please note that this meeting will be livestreamed and the recording will be publicly available on  
Tauranga City Council's website: [www.tauranga.govt.nz](http://www.tauranga.govt.nz).*

**Marty Grenfell  
Chief Executive**



# Terms of reference - Waiāri Kaitiaki Advisory Group

---

## Membership

---

<b>Co-chairs</b>	Two members to be appointed as co-chairs. Council nomination; and Darlene Dinsdale – Mokopuna o Tia me Hei, Co-chair representative of iwi/hapū
<b>Tauranga City Council representatives (2)</b>	Cr Hautapu Baker Cr Steve Morris  <b>Alternate:</b> Cr Mikaere Sydney (and during his leave of absence) Cr Rod Taylor
<b>Western Bay of Plenty District Council representatives (2)</b>	Mayor James Denyer Deputy Mayor John Scrimgeour
<b>Iwi/ hapū representatives (4)</b>	Darlene Dinsdale – Mokopuna o Tia me Hei Manu Pene - Ngāti Whakaue ki Maketu (Te Hononga) Maru Tapsell – Te Kapu o Waitaha Helen Biel – Tapuika Iwi Authority
<b>Iwi/hapū representatives (alternates)</b>	Tapuika Iwi Authority Te Kapu o Waitaha Mokopuna o Tia me Hei Ngāti Whakaue ki Maketu (Te Hononga)
<b>Bay of Plenty Regional Council representative (non-voting)</b>	Consents Manager
<b>Quorum</b>	Two representatives from the consent holders and two representatives from iwi/hapu, including one of the Co-chairs. However, where a major decision is required, the quorum will be one representative from each entity.  The Bay of Plenty Regional Council representative is not counted towards quorum.
<b>Decision-making</b>	By consensus where possible. If consensus cannot be reached, by majority vote.  If there is an equal number of votes, the Co-chair who is chairing the meeting has a casting vote.
<b>Meeting frequency</b>	Four times a year or as required by the group. Meetings to alternate between week and weekend days if possible.
<b>Meeting venue</b>	To alternate between marae and council venues; or as appropriate to a meeting agenda and agreed by the Co-chairs.

## Advisory staff

<b>Tauranga City Council</b>	Chief Executive General Manager: Infrastructure Director: City Waters Manager: Water Services Manager: Water Infrastructure Outcomes Manager: Strategic Māori Engagement
<b>Western Bay of Plenty District Council</b>	Chief Executive Group Manager: Engineering Utilities Manager
<b>Bay of Plenty Regional Council</b>	Compliance Officer with responsibility for Resource Consent #65637

## Ko te wai te ora o ngā mea katoa

### Background

- The Waiāri Kaitiaki Advisory Group (WKAG) was established by consent conditions to provide advice to Tauranga City Council (TCC) and Western Bay of Plenty District Council (WBOPDC) as the joint consent holders in relation to matters covered under Resource Consent #65637, which authorises the take and use of water from the Waiāri Stream for municipal supply.
- Resource Consent #65637 was granted in 2010; since then there has been significant consolidation of iwi interests in the region.
- Te Kapu o Waitaha (2013) and Tapuika Iwi Authority (2014) have signed historic Treaty Settlements and Te Runanga o Ngāti Whakaue ki Maketu (Te Hononga) are still in negotiations.
- Tauranga City Council has active protocol agreements with Waitaha, Tapuika and Ngāti Whakaue ki Maketu including addendums that set out items and areas of significance to each entity.
- The treaty settlements, protocols, addendums and any subsequent plans submitted by Waitaha, Tapuika and Ngāti Whakaue ki Maketu shall be considered as background and context to the operations of the WKAG.
- Te Maru o Kaituna River Authority was established by the Tapuika Claims Settlement Act 2014 for the purpose of restoration, protection and enhancement of the environmental, cultural and spiritual health and wellbeing of the geographical area of the Kaituna River Catchment. It is a permanent joint committee under the Local Government Act 2002 and co-governance partnership between local authorities and iwi that share an interest in the Kaituna River. Recommendations will be made to Te Maru o Kaituna River Authority where required.

### Role

- To exercise kaitiakitanga in relation to the Waiāri Stream to restore, protect and enhance the awa.
- To provide advice and recommendations to Tauranga City Council and Western Bay of Plenty District Council, as the joint consent holders, in relation to matters covered under Resource Consent #65637 which authorises the taking of water from the Waiāri Stream for municipal supply.

## Scope

- Provide advice and recommendations to the consent holders relating to projects, action or research designed to restore, protect or enhance the health and well-being of the Waiāri Stream.
- Consider the monitoring requirements and outcomes under conditions 7.1 and 7.2 of the consent. Discuss the results of other monitoring undertaken by the group, which may include monitoring the adverse effects on environmental, heritage, cultural, economic and recreational aspects.
- Determine the actions to be taken in response to monitoring reports and make recommendations to the consent holders as appropriate.
- Provide advice and make recommendations to the consent holders and the Bay of Plenty Regional Council in relation to Part 2 and, in particular, to sections 6(e) and 7(a) of the Resource Management Act 1991, as they relate to this consent.
- Inform the Bay of Plenty Regional Council of the effects of the water take authorised under the consent on the mauri and mauriora of the Waiāri Stream.
- Review and provide feedback to Tauranga City Council and Western Bay of Plenty District Council on the Water Conservation Strategy required to be submitted as a condition of the consent.
- Discuss any other relevant matters that may be agreed by the group.
- Work together with the Kaitiaki Group established under Resource Consent RM16-0204-DC.04; which authorises the Western Bay of Plenty District Council to discharge treated wastewater from the Te Puke Wastewater Treatment Plant to the Waiāri Stream.
- Provide advice and recommendations to the consent holders on the future governance model of the Waiāri Stream.
- Provide recommendations to Te Maru o Kaituna River Authority where required.

## Reporting

- The Waiāri Kaitiaki Advisory Group will report to its member entities key discussion points, outcomes and actions following each formal meeting of the Advisory Group.

## Co-chair selection process

- Co-chairs will be appointed every three years in alignment with the local government election cycle. The appointments will take place as soon as is reasonably practical following local government elections.
- The Co-chair representing the consent holder will be appointed by the Tauranga City Council and Western Bay District Councils.
- The Co-chair representing iwi/hapū will be appointed by the iwi/hapū representatives.

**NB:** *Resource consent condition 10.2 defines the membership of the Waiāri Kaitiaki Advisory Group.*

*Resource consent condition 10.7 notes that the Waiāri Kaitiaki Advisory Group shall cease if all members of the group agree the group is to be disbanded. In such case Tauranga City Council and Western Bay of Plenty District Council (as consent holders)<sup>1</sup> shall give written notice of this to the Chief Executive of the Bay of Plenty Regional Council.*

*Advice notes from Resource Consent #65637 include:*

---

<sup>1</sup> Insertion made for clarity

- (10) *The Kaitiaki Advisory Group may make recommendations to the Regional Council to review conditions of this consent in accordance with condition 11 and s128 of the Resource Management Act 1991.*

*For the avoidance of doubt, the Advisory Group is informal in nature and is NOT established as a committee, subcommittee or other subordinate decision-making bodies of Council under clause 30(1) of Schedule 7 of the Local Government Act 2002 and does not have any delegated decision-making powers.*

## Order of Business

<b>1</b>	<b>Opening karakia</b> .....	<b>9</b>
<b>2</b>	<b>Apologies</b> .....	<b>9</b>
<b>3</b>	<b>Public forum</b> .....	<b>9</b>
<b>4</b>	<b>Acceptance of late items</b> .....	<b>9</b>
<b>5</b>	<b>Confidential business to be transferred into the open</b> .....	<b>9</b>
<b>6</b>	<b>Change to order of business</b> .....	<b>9</b>
<b>7</b>	<b>Declaration of conflicts of interest</b> .....	<b>9</b>
<b>8</b>	<b>Business</b> .....	<b>10</b>
8.1	Appointment of Co-chair to Waiāri Kaitiaki Advisory Group .....	10
8.2	Western Bay of Plenty District Council Report March 2025 .....	11
8.3	Waiari Kaitiaki Advisory Group Operations Report .....	16
8.4	Waiari Kaitiaki Advisory Group - Cultural Recognition Development Update March 2025 .....	22
<b>9</b>	<b>Discussion of late items</b> .....	<b>27</b>
<b>10</b>	<b>Closing karakia</b> .....	<b>27</b>





- 1 OPENING KARAKIA**
- 2 APOLOGIES**
- 3 PUBLIC FORUM**
- 4 ACCEPTANCE OF LATE ITEMS**
- 5 CONFIDENTIAL BUSINESS TO BE TRANSFERRED INTO THE OPEN**
- 6 CHANGE TO ORDER OF BUSINESS**
- 7 DECLARATION OF CONFLICTS OF INTEREST**

## 8 BUSINESS

### 8.1 Appointment of Co-chair to Waiāri Kaitiaki Advisory Group

**File Number:** A17683535

**Author:** Anahera Dinsdale, **Acting Team Leader: Governance Services**

**Authoriser:** Christine Jones, **General Manager: Strategy, Growth & Governance**

#### PURPOSE OF THE REPORT

1. To appoint a Co-chair to Waiāri Kaitiaki Advisory Group.

---

#### RECOMMENDATIONS

That the Waiāri Kaitiaki Advisory Group:

- (a) Receives the report "Appointment of Co-chair to Waiāri Kaitiaki Advisory Group".
- (b) Recommends to Tauranga City Council and Western Bay of Plenty District Council that Councillor ..... be appointed as the Co-Chair of Waiāri Kaitiaki Advisory Group.

---

#### BACKGROUND

2. The requirements of the Terms of Reference under "Co-chair selection process" provide for Co-Chair arrangements for the Advisory Group. The Councillor representing the consent holder must be appointed by Tauranga City Council (TCC) and Western Bay of Plenty District councils following the recommendation from the Waiāri Kaitiaki Advisory Group (Advisory Group).
3. Once the Advisory Group has made a recommendation, this will be forwarded to both councils for approval.

#### ATTACHMENTS

**Nil**

## 8.2 Western Bay of Plenty District Council Report March 2025

**File Number:** A17677493

**Author:** Anahera Dinsdale, Acting Team Leader: Governance Services

**Authoriser:** Clare Sullivan, Team Leader: Governance Services

### PURPOSE OF THE REPORT

1. To report on WBOPDC operational activities associated with the Waiari Water Supply Scheme.

---

### RECOMMENDATIONS

That the Waiāri Kaitiaki Advisory Group:

- (a) Receives the report "Western Bay of Plenty District Council Report March 2025".

---

### EXECUTIVE SUMMARY

2. Waiari and Kaituna project group

Western Bay of Plenty District Council (**Council**) acknowledges that there are several projects and work that WBOPDC it is involved with, in and around both the Waiari and Kaituna. Many of these projects and work on the Waiari have similar goals or have the potential for cross-over.

Tangata Whenua with connections to the Waiari and Kaituna have laid out their aspirations for these taonga through several forums that they are members of together with their local government partners. The Tangata Whenua members of the Waiari Kaitiaki Advisory group developed a cultural recognition framework that outlined six key kaupapa they wanted to progress in relation to the Waiari, namely –

**(a) Mauri Model application**

The implementation of a Te Ao Māori/Matauranga Māori approach to monitoring the wellbeing of the Waiari.

**(b) Rest area restoration – Waiari Bridge Area**

Enabling safe access to the Waiari by improving the rest area at the Waiari bridge.

**(c) Tohu Māori**

Taking a taonga centric approach to storytelling, acknowledgment and cultural recognition along the Waiari.

**(d) River access points**

Identify potential areas for safe and functional access to the Waiari.

**(e) Regeneration programmes**

Consolidate environmental enhancement initiatives along the Waiari and build a pathway for Tangata Whenua to partner on this work.

**(f) Education and Employment pathways**

Build the capacity of Tangata Whenua to be kaitiaki of and connect with the Waiari through education and employment.

3. There is also Te Tini a Tuna Kaituna Action Plan developed by Te Maru o Kaituna and other working groups that influence mahi that Council is involved in along both the Waiari and the Kaituna.
4. Many of the aspirations that drive this work are the same for each group, and in the case of Tangata Whenua they come from the same iwi members. For this reason, Council has established an internal project group to ensure that the work we do as an organisation is aligned across all these groups. The project group includes staff from Council's Strategy and Community and Infrastructure Groups, with oversight from members of Council's Executive Leadership Team. It will provide the basis for regular updates to this forum and others such as Te Maru o Kaituna. The first item to be presented on is the work being done in relation to item 2 of the rest area restoration.

**BACKGROUND****Waiari bridge area restoration project**

5. The Waiari bridge area is a historically and culturally significant site located immediately east of Te Puke. The priority area includes the Waiari from Makahae and Tawakepito Marae to the Waiari Rail Bridge, encompassing the road bridge, and part of the Te Ara Kahikatea walkway. The site is rich in cultural heritage, featuring pā, urupā, waahi tapu, and other places of significance, including the former historic Waiari flax mill and sawmill.
6. The primary access point to the Waiari is the Waiari Landing Reserve, located down Waiari of the road bridge. Visitors can reach the site via an informal driveway and car park on road reserve, or by walking or cycling along the Te Ara Kahikatea pathway. However, there are no formed pathways connecting the site from the east to local marae, and existing access points present safety and environmental challenges.
7. The restoration project focuses on improving safe access to the swimming area, restoring riverbank stability through riparian planting, and enhancing cultural recognition through signage, pou carvings, and other interpretive elements. Proposed developments include safer pedestrian crossings, infrastructure improvements for recreational use, and ecological monitoring initiatives.
8. The project will involve collaboration with iwi, local community groups, and government agencies to ensure that restoration efforts align with cultural, environmental, and recreational priorities.

**Project priorities**

9. Short-term (January 2024 – June 2025)
  - Install interim safety measures for access at the road bridge;
  - Pest plant control and riparian restoration;
  - Increase mowing frequency at the Waiari Landing Reserve;
  - Conduct a Waiari bank erosion assessment;
  - Conduct a stop bank geotechnical assessment;
  - Develop a concept plan for the Waiari Bridge Area, including:
    - Flood-resilient river access improvements;
    - Feasibility of a pedestrian bridge crossing;
    - Feasibility of recreational structures;
    - Safe pedestrian connections from marae;

- Cultural and historical interpretative signage; and
  - Carpark and driveway upgrades.
10. Medium Term (July 2025 – June 2028)
- Assess options for safe Waiari access at the railway bridge;
  - Install at least one cultural design element (e.g., pou or anchor stone);
  - Install a permanent structure for improved river access, e.g., gabion baskets, steps, etc.
  - Restore access to the Waiari behind Tawakepito and Makahae Marae and downstream of the road bridge; and
  - Implement the Waiari Bridge Area concept plan.

### **Funding and delivery**

11. WBOPDC approved funding of \$1.1M through its 2024-34 LTP for the Waiari Rest Area Restoration project, with \$200,000 currently available and a further \$436,000 available from 1 July 2026. This budget is held by Council's Transportation team who are responsible for the management and delivery of this project.

### **Current plans**

#### Concept plan development

12. Feedback received from the 2024 Kaituna/Waiari Waka Launching Feasibility study, hui with the Te Ara Kahikatea Pathway Society, and WKAG Cultural Recognition site visits in 2024 informed the initial development of a draft concept plan for the Waiari Bridge Area. Concept planning was paused in late 2024 until the appropriate banks tests are carried out and a report available to help understand the opportunities and limitations for the area. This will determine what structures are possible, where they're best placed, how they tie in with community aspirations, and how they connect with other WKAG priority areas and the Te Puke Spatial Plan.

#### Interim safety measures

13. On 16 December 2024, BOPRC granted WBOPDC a Bylaw Authority to install a temporary rope handrail with timber posts as an interim safety measure for Waiari access below the road bridge. This works has not yet begun; however, the bylaw is valid until June 2025 before the bylaw conditions may need to be reviewed by BOPRC.

#### Waiari banks clean up

14. WBOPDC will work with Tangata Whenua for the removal of pest plants and clean-up of the Waiari banks beside the Waiari swimming site. BOPRC confirm this may be a permitted activity in accordance with the Regional Natural Resources Plan (RNRP) so long as the conditions of the permitted rules are met. The conditions are quite specific, and do not propose the removal of any native plants. Council will seek the guidance of BOPRC to put this site clean-up to action.

## **NEXT STEPS**

#### Waiari bank assessments

15. WBOPDC will collaborate with BOPRC Flood Protection and Drainage Bylaws team to undertake an initial Waiari bank erosion assessment and geotechnical assessment to understand the feasibility of building permanent structures at the bridge area. This will inform the further development of the draft concept plan.

On Monday 24 February iwi members of the Waiari Kaitiaki Advisory Group and staff members from Tauranga City Council and Western Bay of Plenty District Council, met to implement a plan to deliver on the six elements of the cultural recognition framework. It was agreed that the group will come together with relevant staff from both Councils to work through some of the challenges with this project.

A copy of the concept plan for the bridge area restoration is attached to this report.

## ATTACHMENTS

1. **Attachment 1 - Waiari Bridge Area Restoration draft concept plan - A17677426** [↓](#) 



### 8.3 Waiari Kaitiaki Advisory Group Operations Report

**File Number:** A17633780

**Author:** Peter Bahrs, **Manager:** Water Services

**Authoriser:** Nic Johansson, **General Manager:** Infrastructure

#### PURPOSE OF THE REPORT

1. To update the Waiāri Kaitiaki Advisory Group of Stream Flows and other Operational Activities.

---

#### RECOMMENDATIONS

That the Waiāri Kaitiaki Advisory Group:

- (a) Receives the report "Waiari Kaitiaki Advisory Group Operations Report".
- (b) Provides feedback or comment on report, as needed.

---

#### EXECUTIVE SUMMARY

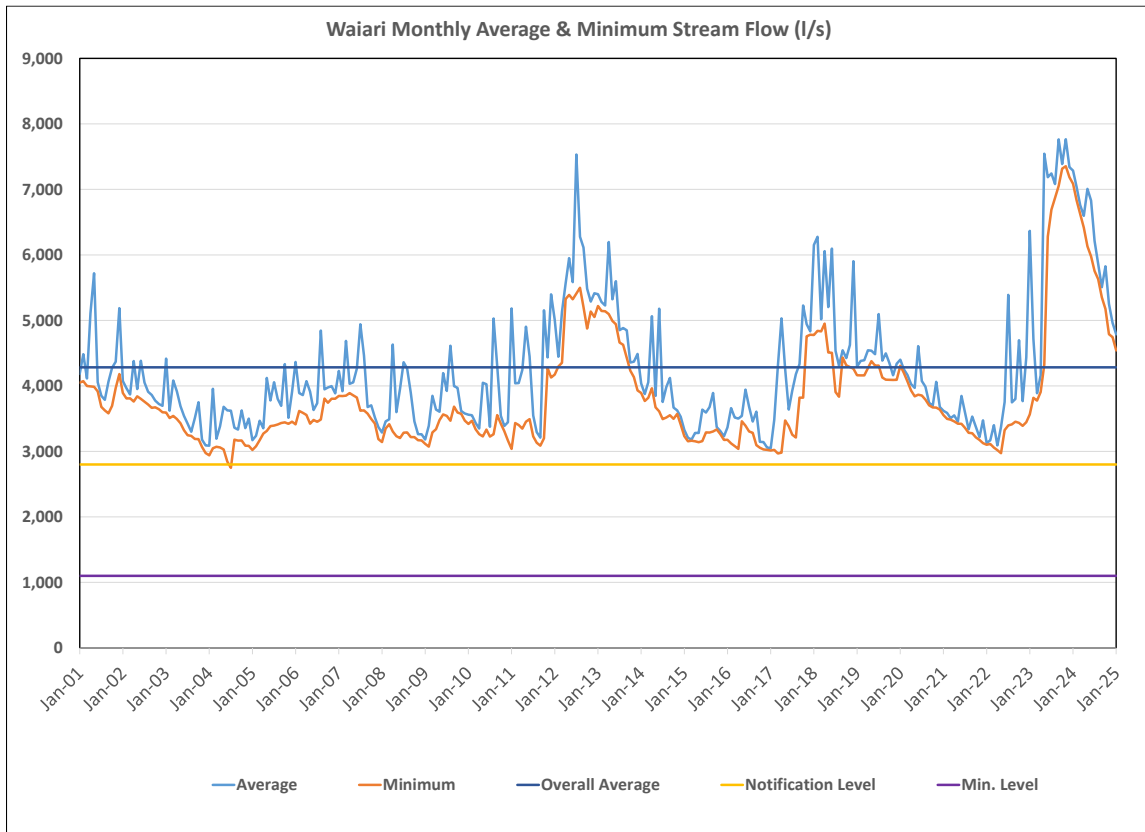
2. Overall, while the Waiāri stream flows have shown a downward trend from December 2023 the average flows are still at a higher level compared to the longer-term average flows.
3. The biomonitoring survey was undertaken in February 2025 and the report will be presented at the next advisory group meeting.

#### WAIĀRI STREAM FLOW DATA

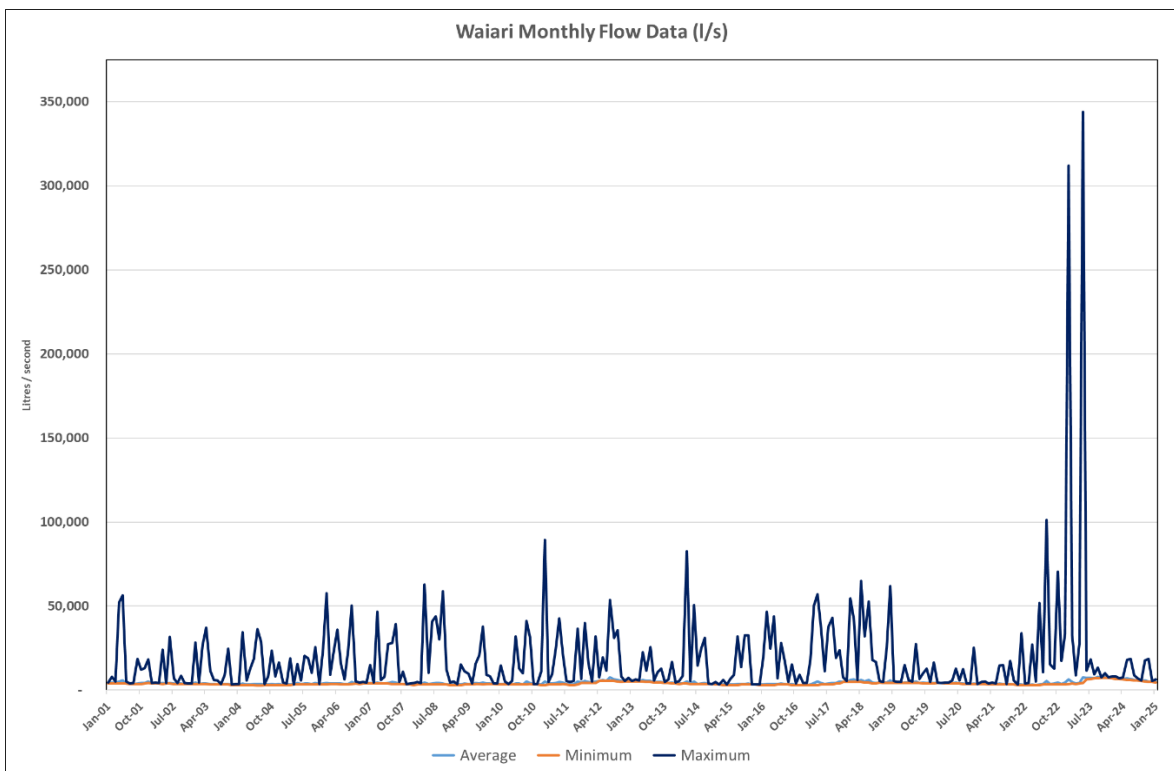
4. The Waiāri stream flow for monthly average and minimum flows from January 2001 to end of January 2025, and is shown in Graph 1 below. The maximum flows have been omitted to allow better definition of the data.
5. The graph shows that overall, the current Waiāri flows remain above the longer-term average flows.
6. The maximum flows are shown together with the average and minimum flows from January 2001 to end of January 2025, in Graph 2 below.
7. The extreme rainfall and subsequent flooding events are clearly evident in the large flow spikes recorded on the 28<sup>th</sup> January 2023 and the 9<sup>th</sup> May 2023.
8. Graph 3 below, shows total daily flow for the Waiāri from January 2001 to end January 2025 and includes the amounts abstracted and the stream residual flow.
9. Abstraction from the Waiāri stream commenced in October 2022, for commissioning purposes and the plant was brought online for production in December 2022.



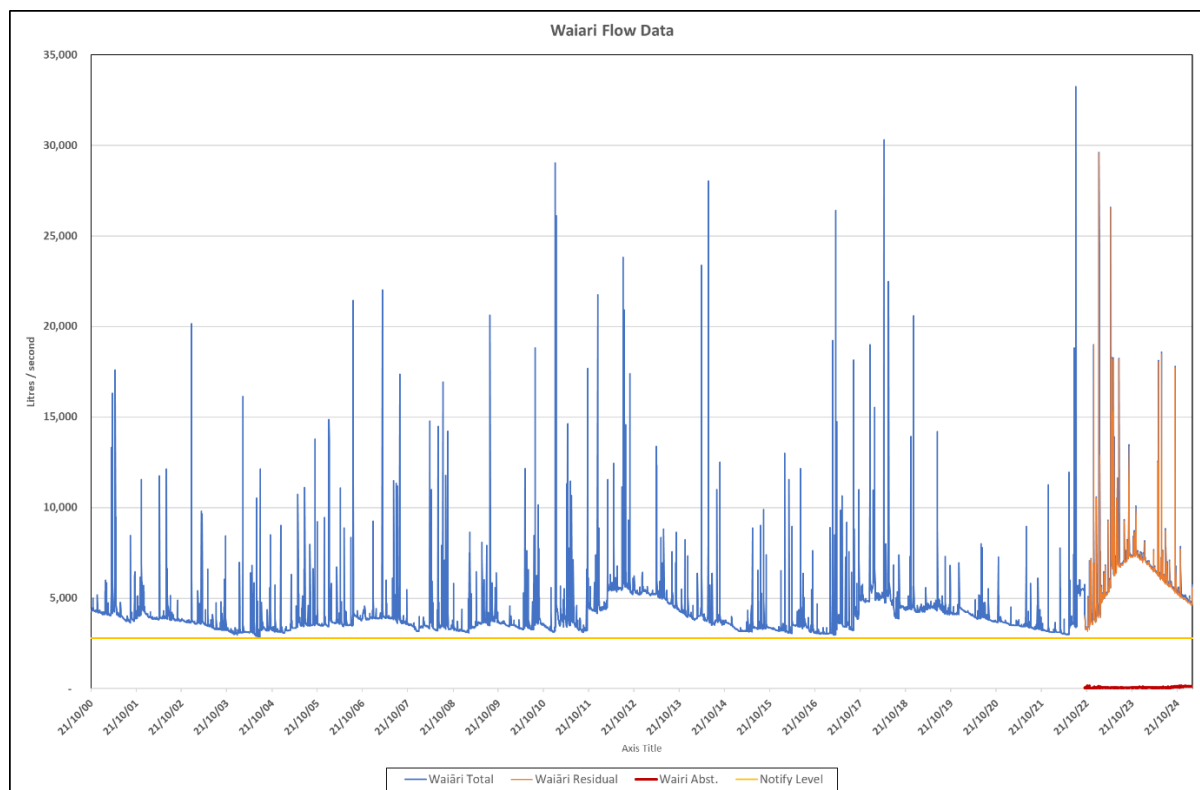
Graph 1 Monthly average and minimum Waiāri Flows



Graph 2 Monthly Maximum, Average and Minimum Waiāri Flows



Graph 3 Average daily flows for the Waiāri January 2001 to end January 2025.



10. Graph 3, shows total, abstracted and residual flow for the Waiāri during the period January 2001 to end January 2025.
11. The average residual flow for January 2025 was about 4,790 litres per second (l/s) compared to the long-term average of about 4,300 l/s. This is about 11% more than the long-term average. This has however, dropped significantly compared to January 2024 where flows were at about 7,290 l/s which was about 70% more than this average.
12. The average abstraction (shown by the red line on the graph) for January 2025 was 140 l/s with a maximum of 159 l/s.
13. It is noted that the flow in TCC's other two source water streams are showing similar trends to that being seen in the Waiāri.

### WAIĀRI STREAM MONITORING

14. The annual stream biomonitoring survey was undertaken during the second week of February 2025, and input was received from iwi on aligning the sampling to the phases of the moon. The survey report will be issued once finalised and presented at the next Waiāri Kaitiaki Advisory Group meeting.
15. In the interim find some photos of interest taken during the survey:



16. This is a large longfin tuna captured upstream of the WTP. This species of tuna is endemic to New Zealand and is more threatened than the short fin tuna because the longfin prefers rocky, well-shaded, forested waterways, while the shortfin will quite happily live in soft-bottomed, low-land habitats like farm drains. This tuna was very large (>1 m), indicating that it is a female.



17. This is a giant kokopu – one of the whitebait species. It was quite special to have captured it (upstream of the WTP) as my understanding is that this species hasn't been recorded in the Waiāri since 2019, when it was recorded further downstream of the Wastewater Treatment Plant.



18. This one is a torrent fish captured downstream of the Intake. There is little information about this species, as it is poorly researched and not well understood. However, it likes clear, fast-flowing water in riffles or rapids. It's stream-lined shape allows it to sit on the stream bottom while the waters wash over its body.

#### STATUTORY CONTEXT

19. The flow and biomonitoring reporting are requirements under Consent Number: 65637 "Take Water from the Waiāri Stream for Municipal Supply"

#### NEXT STEPS

20. Receive the report and provide comments, as needed, on data presented.

#### ATTACHMENTS

1. Waitaha WKAG Report March 2025 - A17677403 [↓](#) 





## 8.4 Waiari Kaitiaki Advisory Group - Cultural Recognition Development Update March 2025

**File Number:** A17637729

**Author:** Kelvin Hill, **Manager:** Water Infrastructure Outcomes

**Authoriser:** Nic Johansson, **General Manager:** Infrastructure

### PURPOSE OF THE REPORT

1. To provide an update on the status of the cultural recognition meetings and discussions with iwi representatives as requested at earlier Waiāri Kaitiaki Advisory Group (WKAG) meeting held on 8 November 2023 at Tuhourangi Marae in Te Puke.
2. For the Waiāri Kaitiaki Advisory Group (WKAG) members to discuss all (seven) actions and tasks including costings and cost centres and provide direction and allow work to commence across all seven cultural initiatives.
3. The Cultural Recognition Site investigation document was last updated in June 2024. A revised version will be tabled at the meeting.

---

### RECOMMENDATIONS

That the Waiāri Kaitiaki Advisory Group:

- (a) Receives the report "Waiari Kaitiaki Advisory Group - Cultural Recognition Development Update March 2025".

---

### EXECUTIVE SUMMARY

4. The Cultural recognition report is a summary of decisions and discussions leading to a list of prioritised initiatives for cultural recognition for the Waiāri Water Supply Scheme project. Iwi representatives met to discuss the subject in late 2022, 13 April and 2 May 2023 for the purpose of contributing their input into the cultural recognition document developed with the Takawaenga team in 2022.
5. The agreed approach moving forward is for staff from both Councils to form a sub-group with Tapuika, Waitaha, Ngāti Whakaeu ki Maketu & Mokopuna o Tia me Hei.
6. Key members of this subgroup as of February 2025 include:
  - TAPUIKA Representative - Helen Biel
  - WAITAHA Representative – Luke Whare
  - NGATI WHAKUE KI MAKETU Representative - Manu Pene
  - MOKOPUNA O TIA ME HEI Representative - Darlene Dinsdale
  - Tauranga City Council Representative - Yolanda Tipuna
  - Tauranga City Council Representative – Kelvin Hill
  - Tauranga City Council Representative – Peter Bahrs
  - Western Bay of Plenty District Council Representative - Chris Nepia
  - Western Bay of Plenty District Council Representative – Mokoera Te Amo
  - Western Bay of Plenty District Council Representative – Jason Crummer

7. Raponi Wilson resigned from his position at Tapuika in December 2024, he was a former representative of the WKAG for Tapuika. We thank him for his energy and commitment to achieving the cultural recognition initiatives. Helen Biel was an alternate for Tapuika and will now be the Tapuika representative on the WKAG.
8. The purpose of the report is to provide an update to the WKAG meeting, reflecting the status of each of the seven Cultural initiatives.
9. The initial budget sought to implement all the cultural initiatives was estimated to be around \$1.65M set in 2024.
10. TCC have an approved budget of \$250k in this current financial year. This budget has been assigned against several Cultural initiatives with initiatives underway.
11. TCC Long Term Plan approved the submission from the WKAG committee to fund \$250k in the 2025/26 and \$250k in the 2026/27 financial years to support the cultural recognition initiatives.
12. A submission to the Bay of Plenty Regional Council (BOPRC) Long Term Plan was submitted by the Chair of the WKAG in April 2024, seeking financial support for the cultural recognition initiatives. A similar financial contribution to that provided by TCC was sought. BOPRC have not committed funding to this project, however, are committed to providing in kind support.
13. A similar submission both in terms of content and contribution value sought will be submitted to WBOPDC's Long Term Plan. A sum of \$1.1M has approved for the Waiāri Rest Area restoration project.
14. The Seven initiatives are as follows:

Mauri Model Application	In Progress
Rest Area Restoration (Waiāri Bridge)	WBOPDC Leading
Tohu Māori - Storytelling cultural interpretation options	In Progress
River Access Points	In Progress
Regeneration Programmes	Planning underway
Education and Employment Pathways	Longer Term Activity
Waiāri Water Supply for Iwi	Meeting to be set up

15. Previous reports have detailed each of the seven initiatives, outlining the brief, aim and objective and have included budget and potential timeframes. Recently the operations group has discussed a reset of the reporting given WBOPDC have taken the lead on a number of these initiatives. The most recent hui was held on Monday, 24 February 2025 as such a revised reporting structure will not be available until the next WKAG meeting.
16. However positive progress has been achieved in the following areas.

#### MAURI MODEL APPLICATION

17. **Brief:** Design an Iwi Monitoring Programme that implements the Mauri Model in an ongoing manner to be implemented as soon as possible.
18. **Aim:** To develop the Iwi Monitoring Programme including key aspects and costs and secure ongoing funding from suitable sources.
19. **Objective:** To create a suite of tools that act as a mechanism for accountability of Council's consent conditions and useful to mitigate.
20. **Action Update:** We have been working with Tapuika and Waitaha to enhance the current Mauri Model, particularly the health indicators to provide a clear understanding of the Mauri of the stream and paths to improve this.

## REST AREA RESTORATION (WAIĀRI BRIDGE)

21. **Brief:** The Rest Area at the Waiāri Bridge needs urgent attention to enable safe access.
22. **Aim:** Prioritised redevelopment of reserve through WBOPDC Reserve Management Plan or similar.
23. **Objective:** To provide safe access for iwi and the community to the awa.
24. **Action Update:** A separate report has been provided by WBOPDC on this action.

## TOHU MĀORI – STORYTELLING CULTURAL INTERPRETATION OPTIONS

25. **Brief:** Take a taonga centric approach to storytelling, acknowledgement, and cultural recognition along the Waiāri.
26. **Aim:** To tell the local stories around the history of the Waiāri and its importance to the area.
27. **Objective:** Develop an interpretation plan for the length of the Waiāri that acknowledges the sources through the entire network including tributaries to and then also from the Waiāri, identify suitable points for cultural recognition including type of recognition and agreed storytelling. Align with River Access Points plan outlined below.
28. **Cultural Value:** Tanga Whenua have significant pā sites from the top to the bottom of the awa. Iwi have waahi tapu and caves that are sacred and embedded in their history. We need to ensure the stories continue and provide an opportunity for kaumatua and others to share their history of the Waiāri.
29. **Interpretation Plan:** This is directed by the sites identified in theme “River Access Points”.
30. **Action Update:** We have talked to a potential audiovisual company who has previously worked with WBOPDC on their iwi stories to assist in developing a storytelling plan for the Waiāri.
31. **Action Update:** We have met with Toi Takapu artist collective to discuss cultural recognition art works and have also held a wananga with iwi representatives to help provide a framework for moving this forward with Toi Takapu.

## RIVER ACCESS POINTS

32. The following sites have been agreed to and identified as not only access points to the awa, but places for Tohu Māori, providing historical and backstories significant to the area that are useful for an interpretation plan.
  - (a) Te Rerenga - this site has access that TCC can explore through TECT. There are lakes swamps and puna. Tapuika have exclusive access.
  - (b) Te Ranga o Hineata, Shaw Road - this site has access on private land. The water is clear and deep in areas and there are puna and stones in the area around Ngaingainui.
  - (c) Potakataka - this area has access that TCC can explore. The awa is deep and cold in this area and has minimal erosion. It has easy access and is suitable for Tapuika to have nohoanga activities and spaces for cultural practices.
  - (d) Tawakepito - access to this site is suitable behind the marae, however, WBOPDC need to look into landowner permission and the potential pathway leading behind the marae to the awa. Perfect opportunity to connect both Makahae and Tawakepito marae to the awa.
  - (e) Waiāri Bridge - access available, however, this needs to be improved and made safer. Surrounding lands need to be explored by WBOPDC for the development of a rest area. This area is significant to Ngāti Tuheke and the flax industry they once led.
  - (f) Kongutuawa ki te Kaituna - the bottom end of the awa currently has stock banks surrounding and access is more challenging. WBOPDC to explore.



## REGENERATION PROGRAMMES

33. **Cultural Value:** The mauri of the river is important to Tangata Whenua. Key to this is having skilled people learning about rongoa, riparian planting and cultural values.
34. **Action Update:** We are currently exploring riparian planting opportunities along sections of the Waiāri including placing orders for plants from the iwi which will be planted next planting season.

## EDUCATION AND EMPLOYMENT PATHWAYS

### The Following Items are Taken Directly from the Cultural Recognition Development Report

35. Cultural Value - Tangata whenua seek to be working at the Waiāri site alongside Council staff delivering education, cultural aspects and kaitiakitanga. An opportunity exists for tangata whenua to be in partnership with Council in the allocation process through scholarships, procurement, and up-skilling staff. Council staff benefit from this approach as tangata whenua develop their cultural capacity within their teams.
36. Scholarship approach - scholarship to cover tertiary fees, living costs to support the student to have 100% focus on study, ideally \$5k annually. Applicants should have an educational programme at the plant with schools, community groups, businesses, and Council. Council to front the financial responsibilities of the scholarship.
37. Education Centre approach - Tangata whenua will work with TCC to co-design the aesthetics of the water treatment plant to reflect cultural inclusion, this includes interior design, cultural interpretation, storyboards, activity zones, access and entry visuals.
38. At the very least cultural practices like whakatau & manaaki are practiced at the site to continue whakawhanaungatanga values. Council staff and new staff inducted, especially those who deal with the Waiāri Project.
39. Community groups should have an opportunity to be educated as well as schools targeted for ongoing opportunities.
40. Council to setup processes that align with expectations.
41. Recruitment approach - Tapuika & Waitaha to lead cultural aspects and expectations into job descriptions and scholarship applications.
42. Co-chair of the KWAG forum to sit on recruitment process and scholarship.
43. Council to setup scholarship processes that align with expectations and technical role.
44. Bonding period - scholarship helps to get qualified, applicant must give back for a particular period of time.
45. **Action Update:** ongoing discussions within the Operations Group on moving this forward.

## WAIARI WATER SUPPLY FOR IWI

46. Wide support from the WKAG committee sought that a seventh initiative be formalised into this report around the supply of water for all Marae within the localised areas of TCC and WBOPDC.
47. Both Councils have infrastructure within the Waiari Stream location that either services existing properties or is a bulk watermain that delivers water outside of the Waiari area. While some of the Maraes already have access to Council water supply. Others do not due to their location being in a non-serviced area.
48. The subject around fairness and availability of water is sought, reference is made by iwi representatives to the resource consent conditions.
49. **Action Update:** A meeting is to be set up between iwi and Hapu representatives with TCC and WBOPDC Chief Executives and the Chair of the Waiari Kaitiaki Advisory Group to discuss this Cultural initiative. An agenda will be prepared and circulated prior to the meeting.

Potential date late March/ April 2025

**ATTACHMENTS**

**Nil**

**9 DISCUSSION OF LATE ITEMS**

**10 CLOSING KARAKIA**