



# **ATTACHMENTS MINUTES**

**City Future Committee meeting**

**Tuesday, 31 March 2026**



---

# Table of Contents

---

9.3	Pāpāmoa East Community and Social Needs Assessment	
	Attachment 1 PDF Presentation - Papamoa East CSSNA_report summary for TCC Feb 2026_ .....	4
9.4	Arterial Route Improvements	
	Attachment 1 PDF Presentation - Item 9.4 - ARR - 31-3-26 City Futures .....	15
9.8	City Centre Development Incentive Fund 2026/27	
	Attachment 1 Preso to CFC 31 March .....	26



# Pāpāmoa East CSSNA

## Report Summary

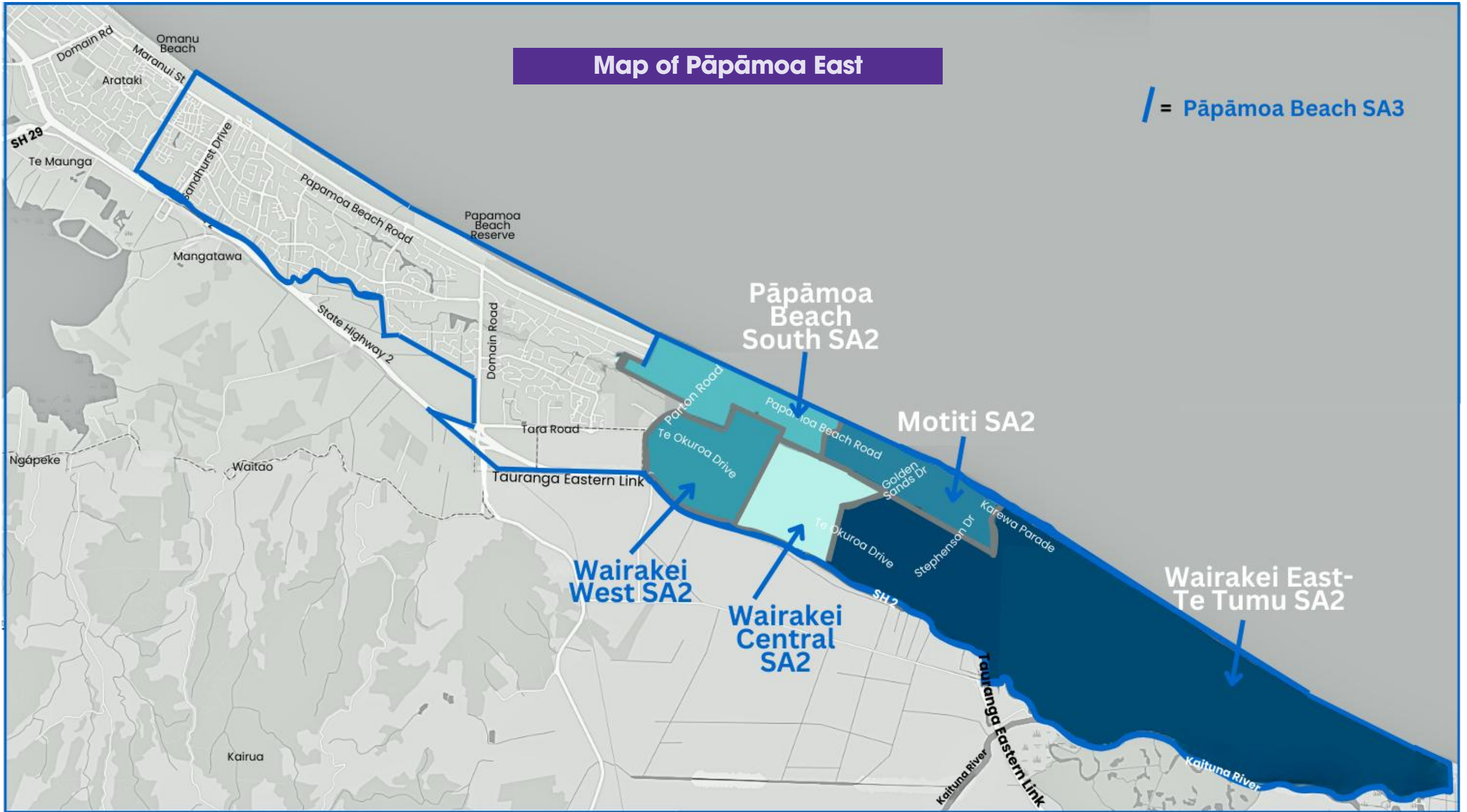
# Background

- Recent changes to social service 'hubs' – closure Hillier Centre (Gloucester Rd) and changes to Anglican Care Waiapu's Pāpāmoa Support Centre/Family Services at 95 Hartford Ave.
- Subsequent relocation/loss of services reducing access for rapidly growing Pāpāmoa East population, especially for low income households/families.
- Calls for a community centre/heart for Pāpāmoa East/Wairakei area for past 15-20 years. TCC plans a community centre for 2032 in Golden Sands/Te Tumu area.



### Map of Pāpāmoa East

/ = Pāpāmoa Beach SA3

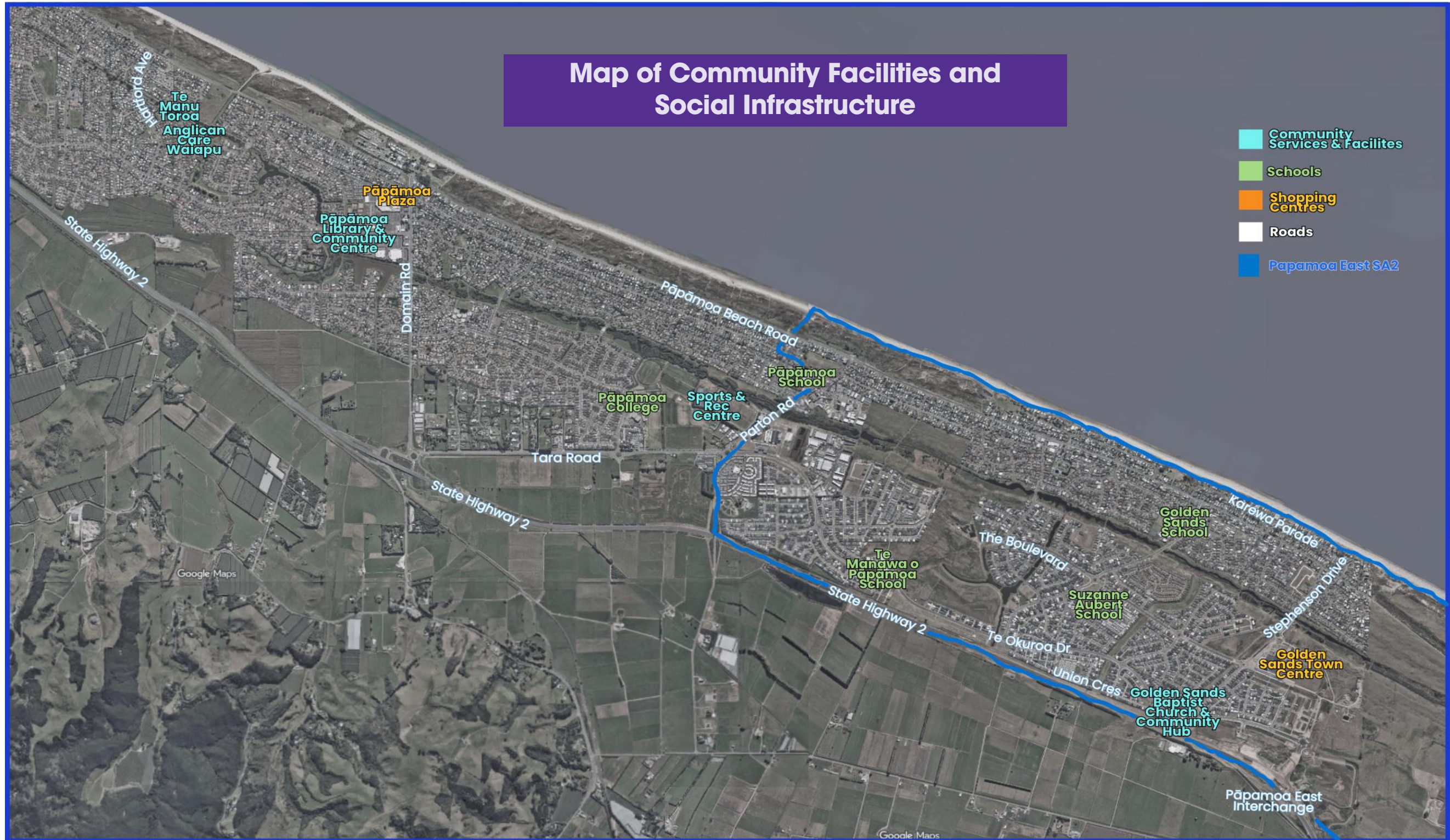


# Demographics

## For Pāpāmoa East

- 17,580 usual residents as at June 2025 (Pāpāmoa as a whole 38,000).
- Grown at least 62% since 2018 census.
- Lot of young families - 46% of households have children, compared to Tauranga (39%) and WBOP(35%).
- 71% NZ European, 19% Māori, six percent Indian.
- 2,400 residents (16%) live in higher deprivation index areas (7,8,9).
- One in four households below \$50,000 annual income (2023 census)





# Issues & Needs Identified

- Socio-economic/cost of living – suburb of haves/have nots
- High need for food support, more visible homelessness/housing issues, social isolation.
- Need more services/support for families, young people, seniors, people of different ethnicities.
- Access challenging, especially for stressed, disabled and/or lower income – expensive in transport and time to Tauranga central or Te Puke.
- Consequences – delays in getting help, more complex problems taking longer to resolve, greater workload for providers.



# What's Needed

- Many people needing help simply don't know where to go.
- Visible well known hub or 'go to' social service centre invaluable for communities (like Hillier Centre).
- 'Hub' benefits include sharing of community knowledge and changes, service coordination and responsiveness.
- Also need Community Centre for Papamoa East /Te Tumu for connection, support, help, information and enjoyable activities.



# Key Messages

- The loss of the Hillier Centre and decreased public knowledge of services still operating from 95 Hartford Ave has created gaps in timely accessibility to support for those in need.
- 2032 is too long to wait for a Community Centre.
- A number of respondents envision a social services hub at 95 Hartford Ave and a broader concept Community Centre at Golden Sands.
- The proposed Community Centre needs to be “the heart” of Pāpāmoa .
- Support and resourcing for providers is required for any interim solutions to locate themselves or re-establish services in the wider Pāpāmoa area.



# Recommendations

- A working group set up asap to help set up the development, feasibility and operation of short term and long term social services and community centre facilities in Pāpāmoa East
- TCC support health, social and community provider plans to develop the facilities at 95 Hartford Avenue Reserve
- If temporary relocation is required while the Hartford Avenue site is developed, mechanisms be considered to support providers to relocate



# Recommendations

- TCC urgently bring forward plans to purchase land and develop a community centre in the Golden Sands area, designed in partnership with the local community and iwi, social, health and community service organisations
- Initiaite or support a campaign to increase the visibility and location of Here2HelpU, Citizens Advice Bureau and other existing local health, social service and community providers



**Ngā mihi**

**Questions?**



## Enabling Right Turn from Ohauti Road to Welcome Bay Road

- The current arrangement was implemented prior to the Welcome Bay Link underpass, and does not reflect current optimal arrangement
- SH29A is required to take some demand currently using Turret Road
- Currently the SH29A (northbound) to Welcome Bay Rd has limited capacity, resulting in PM queuing currently
- This will help relieve pressure on the SH29A/ Welcome Bay Rd intersection
- Enables increased capacity, especially in the PM peak
- Not expected to decrease level of service for current Ohauti Rd users as pinch point is SH29A signal green time

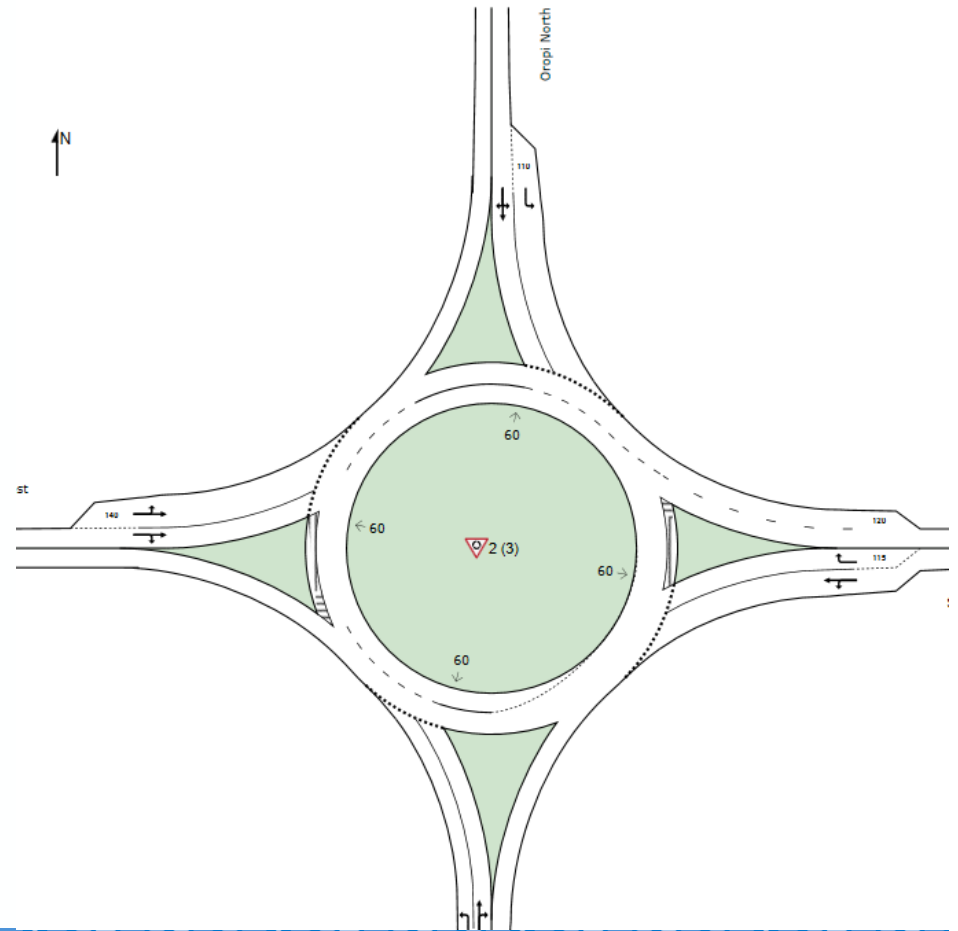


## Variable Messaging Signs

- Travel Time
- Alternative Routes Suggestions
- Forward Warning Messaging

## SH29A / Oropi Road roundabout line markings

- Helps support additional capacity through the Fraser St route



3 | Keep Tauranga Moving



## Fraser Street / Chadwick Road/ Oropi Road roundabout signal metering

- Current arrangement puts Fraser St southbound as the lowest priority leg
- Enables prioritisation of arterial (Fraser St) movements
- Supports operational changes to optimise traffic movement





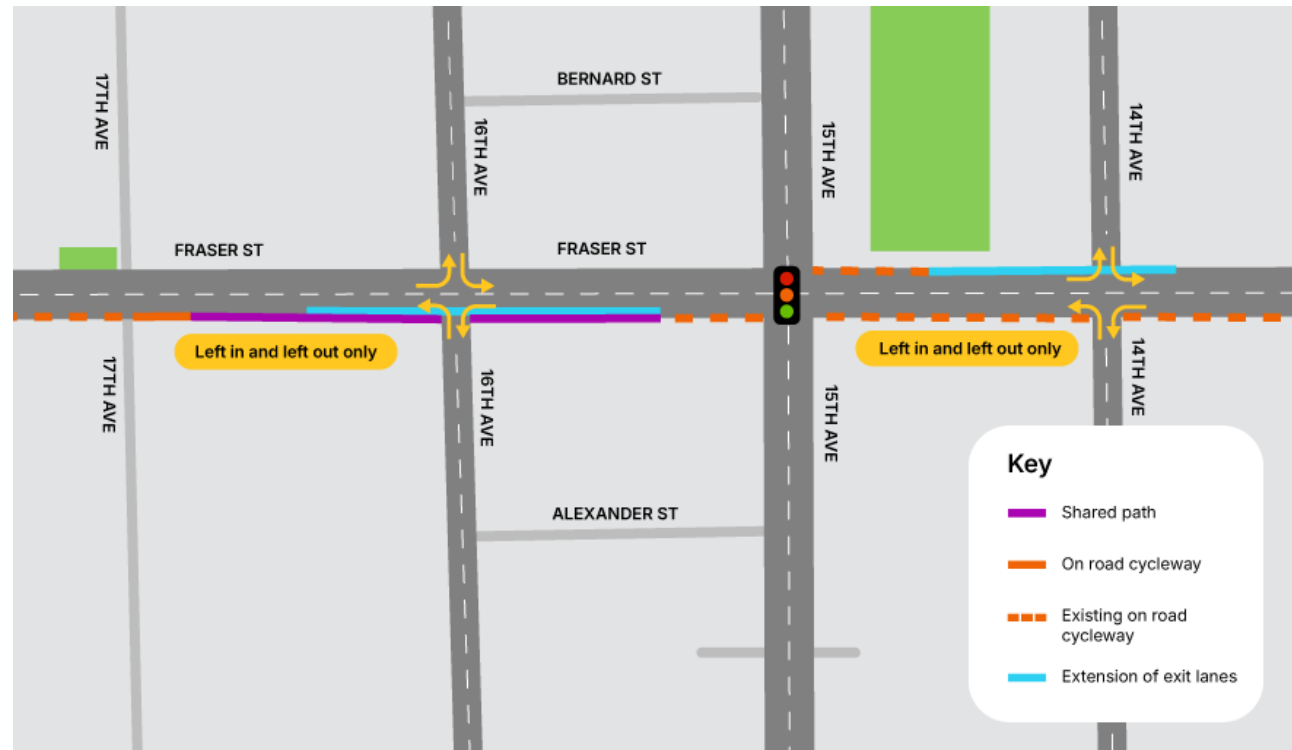
## Welcome Bay Road westbound HOV lane

- Looks to help higher occupancy vehicles through delay
- 51% of respondents supported, however community drop-in raised their primary concern is safety and do not support this
- Expected to provide significant travel time savings for HOV users



## Fifteenth Avenue / Fraser Street intersection optimisation and Left-In Left-Out (LILO) changes

- Retains 2 lanes at exits on Fraser St for longer
- Allows more space to merge, reducing queuing into the intersection
- Improves efficiency of 15<sup>th</sup> Ave/ Fraser St
- Removes right turns/ straight through out of 14<sup>th</sup> Ave and 16<sup>th</sup> Ave
- To be implemented alongside 15<sup>th</sup>/ Turret

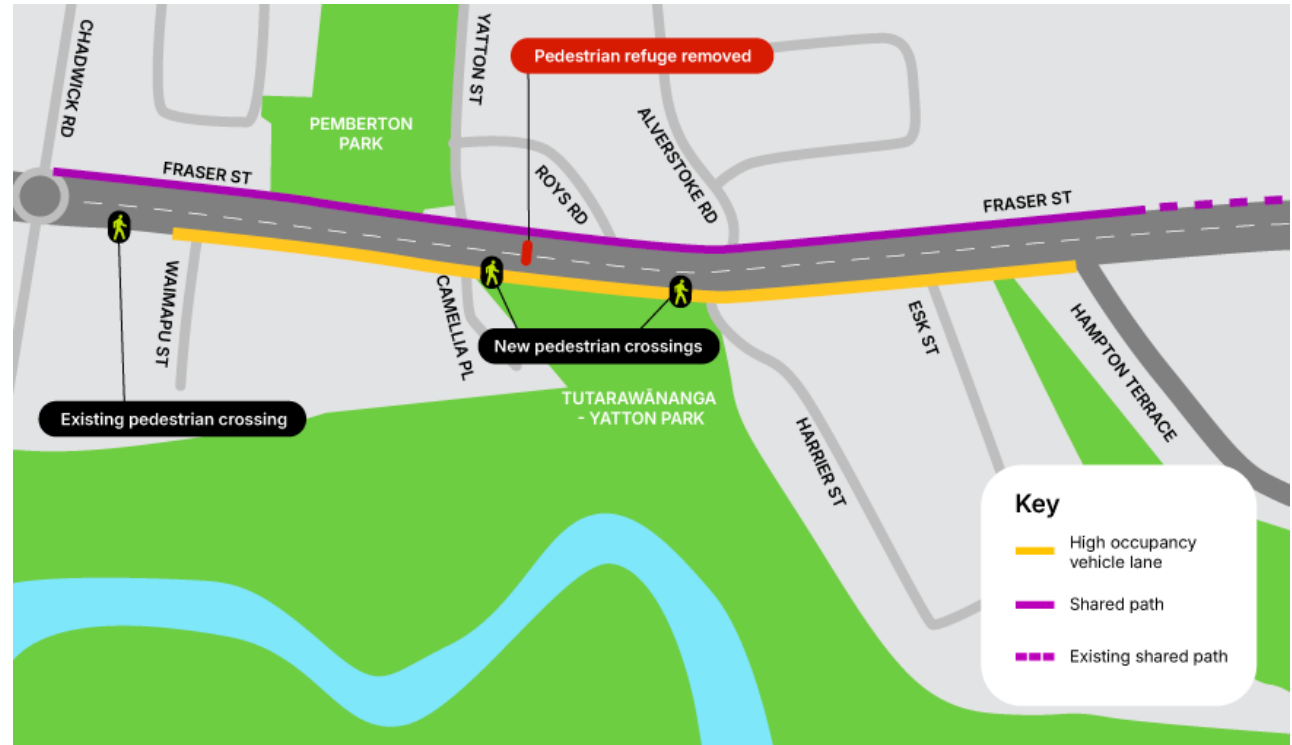


## Carpool Initiatives (App + Priority)

- Supports other changes

## Fraser Street southbound (Merivale to Greerton) HOV lane

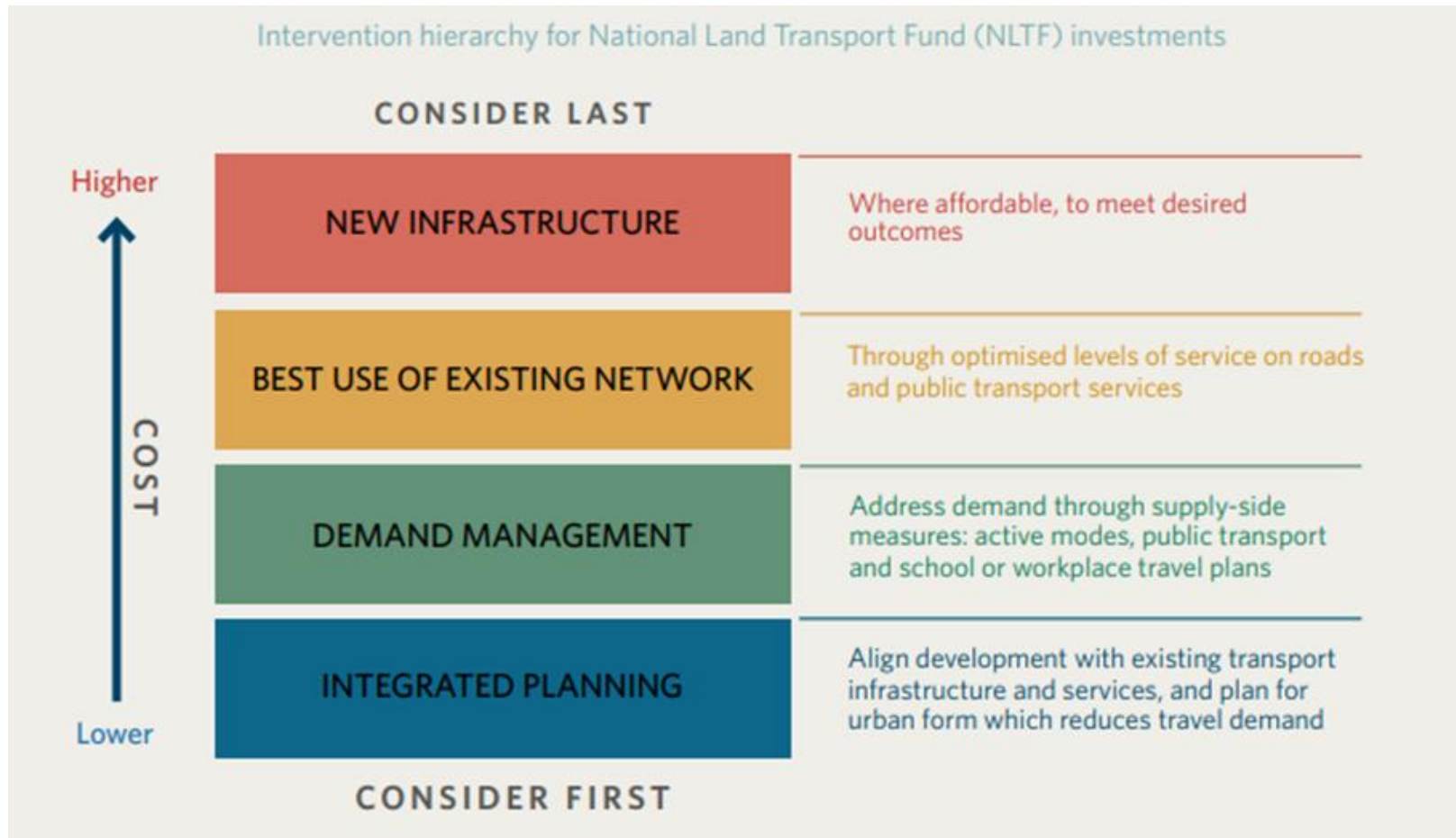
- Would be expected to provide travel time benefits to HOV users
- Likely to increase travel time for non-HOV users
- Substantial cost
- Change of 42 parking spaces would not be available during the afternoon peak only



## Fraser Street southbound (Fraser Cove) HOV lane

- Only likely to provide travel time savings during periods of peak disruption
- Would better sit as part of a more extensive Fraser St upgrade



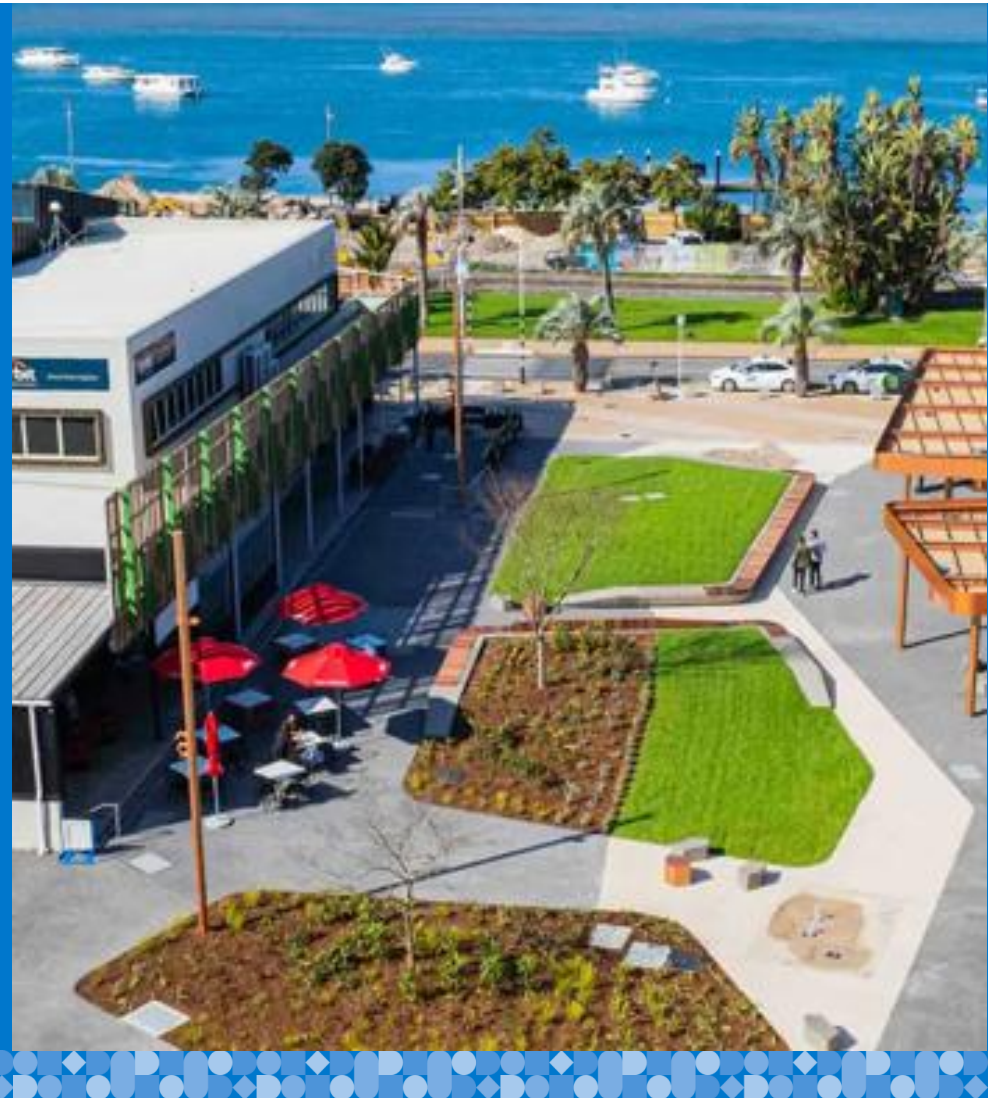




Tauranga City

# City Centre Development Incentive Fund

# Activations Programme



# 2025/26 Programme Highlights

1. **Hoops on the Waterfront – Whai Basketball** | April 2026  
*Collaborative free accessible community event with Whai basketball. Meet the team, shoot hoops with the pros, learn tips and tricks, DJ on-site and epic prizes up for grabs.*  
 CCDIF Support \$1500
  
2. **Pocket Sized play** | weekly each Saturday morning, year round  
*Activities change weekly, encouraging children and their caregivers to join in on the free fun in new public spaces. Approx 80 children plus caregivers attend each week*  
 CCDIF Support: \$800 p/week
  
3. **HOT Pink Walk by Breast Cancer Support Service Tauranga Trust** | October 2025  
*Added contribution toward branded photobooth. Over 4500 attended*  
 TCC Support \$450
  
4. **Free Mini Sized play on the Waterfront** | January 2026  
*Free mini golf was enjoyed by visitors and locals alike.*  
 CCDIF Support \$2725
  
5. **Chinese New year Celebrations – free kids activities** | February 2026  
*Free fan painting activity, traditional music and performance including dragon dance.*  
 CCDIF Support \$2725



## 2025/26 Programme Highlights

1. **International Buskers Day Out** | 31 January 2026  
*Featuring four sensational international street performers who wowed the crowds. Roving entertainment looping surrounding streets*  
 CCDIF Support \$23,000
2. **Chinese New year Celebrations – performance** | February 2026  
*Free fan painting activity, traditional music and performance including dragon dance.*  
 CCDIF Support \$2,725
3. **Glow Kids (School Holiday activation)** | July 2025  
*Silent disco and dance lessons*  
 CCDIF Support \$15,000
4. **Turning on the Christmas lights event** | November 2025  
*Estimated 1500 attendance*  
 CCDIF Support \$5,360



# 2025/26 Programme Highlights

1. **The Little Big Markets** | Monthly markets  
*A vibrant lineup of local talent, from artisan makers to designers and creatives on offer. Live music, free workshops, lawn games, plus plenty more to keep the good vibes rolling.*  
 CCDIF Support \$1,500 per month
  
2. **University of Waikato O week** | January 2026  
*City Centre Walking tours, a waterfront movie night and silent disco in Red Square.*  
 CCDIF Support \$2,725
  
3. **Picnic and Party/Strandfest** | 21 February 2026  
 CCDIF Support \$3,000

## Coming next month

### Winter Lighting activations – Pop Glow Go | Kings Birthday Weekend May/June

*Free fun after dark on Tauranga’s waterfront. Featuring lighting installations, glow in the dark mini golf, neon face painting, live music and more. Held over Kings birthday weekend.*

